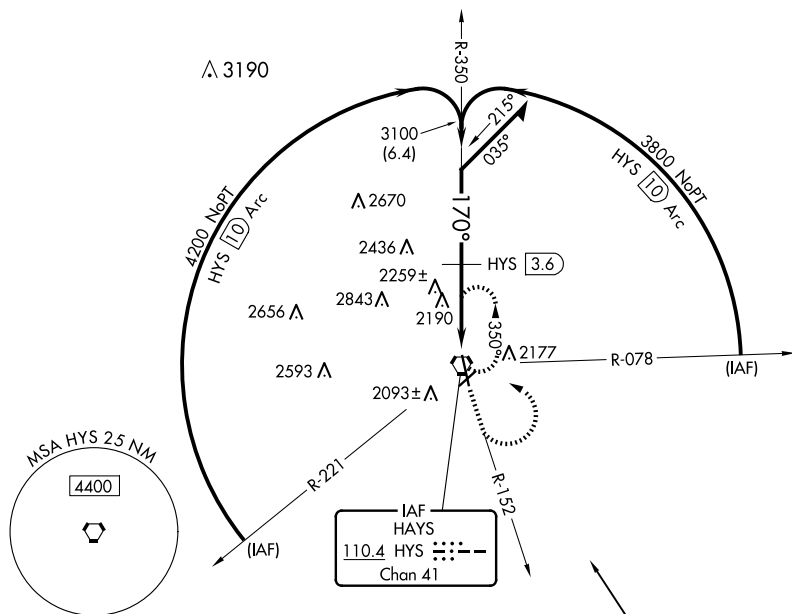


VORTAC HYS <b>110.4</b> Chan <b>41</b>	APP CRS <b>170°</b>	Rwy Idg <b>6501</b> TDZE <b>1999</b> Apt Elev <b>1999</b>
--	------------------------	---

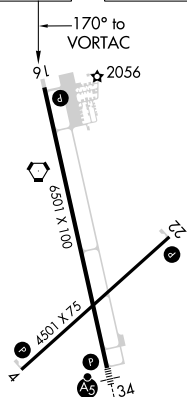
VOR/DME RWY 16  
HAYS RGNL (HYS)

- |   |   |
|---|---|
| <p>▼ When local altimeter setting not received, use Russell altimeter setting: increase all MDA 80 feet and visibility Circling Cat C and D <math>\frac{1}{4}</math> SM. Circling NA for Cat D northwest of Rwy 4 and west of Rwy 16. Visibility reduction by helicopters NA.</p> | <p>MISSED APPROACH: Climb to 3800 via HYS R-152 then diving left turn to 3900 direct HYS VORTAC and hold.</p> |
|---|---|

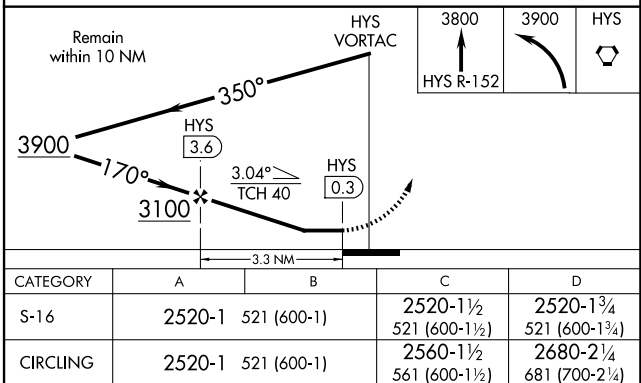
AWOS-3PT <b>125.525</b>	KANSAS CITY CENTER <b>124.4 322.4</b>	UNICOM <b>122.8 (CTAF) ①</b>
----------------------------	--	---------------------------------



ELEV 1999	<b>D</b>	TDZE 1999
-----------	----------	-----------



REIL Rwy 4, 22 and 16 **L**  
MIRL Rwy 4-22 and 16-34 **L**



VOR/DME RWY 16