

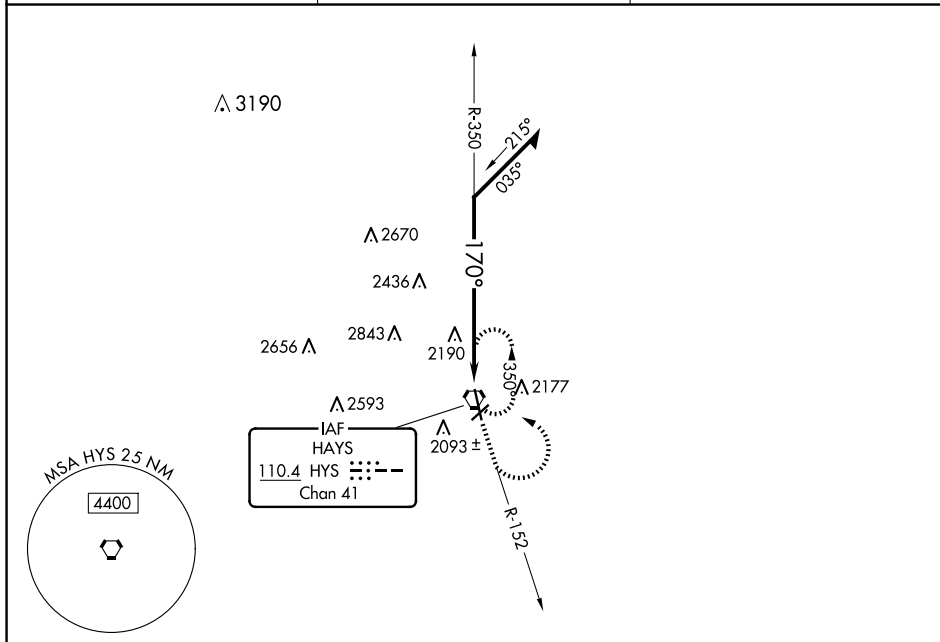
VORTAC HYS 110.4 Chan 41	APP CRS 170°	Rwy Idg 6501 TDZE 1999 Apt Elev 1999
--	------------------------	---

VOR RWY 16
HAYS RGNL (HYS)

T When local altimeter setting not received, use Russell altimeter setting and increase all MDA 80 feet, increase S-16 and Circling Cats B, C and D visibility $\frac{1}{4}$ mile. Visibility reduction by helicopters NA. Circling NA for Cat D northwest of Rwy 4 and west of Rwy 16.

MISSED APPROACH: Climb to 3800 via HYS R-152 then climbing left turn to 3900 direct HYS VORTAC and hold.

AWOS-3PT 125.525	KANSAS CITY CENTER 124.4 322.4	UNICOM 122.8 (CTAF) 0
----------------------------	--	---------------------------------



ELEV 1999

TDZE 1999

170° to VORTAC

91

2056

1065

75

34

REIL Rwy 4, 22 and 16L

MIRL Rwy 4-22 and 16-34L

Remain within 10 NM

HYS VORTAC

350°

3900

170°

DISKS

3800
↑
HYS R-152

3900

3900 (34.9)

CATEGORY	A	B	C	D
S-16	2700-1	701 (800-1)	2700-2 701 (800-2)	2700-2¼ 701 (800-2½)
CIRCLING	2700-1	701 (800-1)	2700-2 701 (800-2)	2700-2¼ 701 (800-2¼)