

WAAS CH 90519 W04A	APP CRS 040°	Rwy Idg TDZE Apt Elev	4500 1990 1999
--	------------------------	-----------------------------	---

RNAV (GPS) RWY 4

HAYS RGNL (HYS)

RNP APCH - GPS.

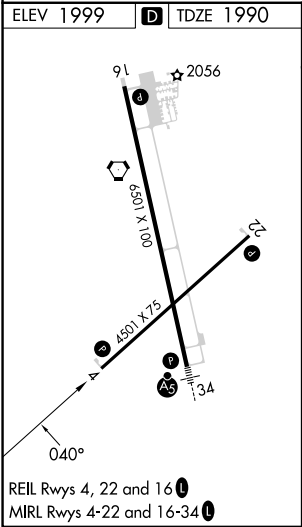
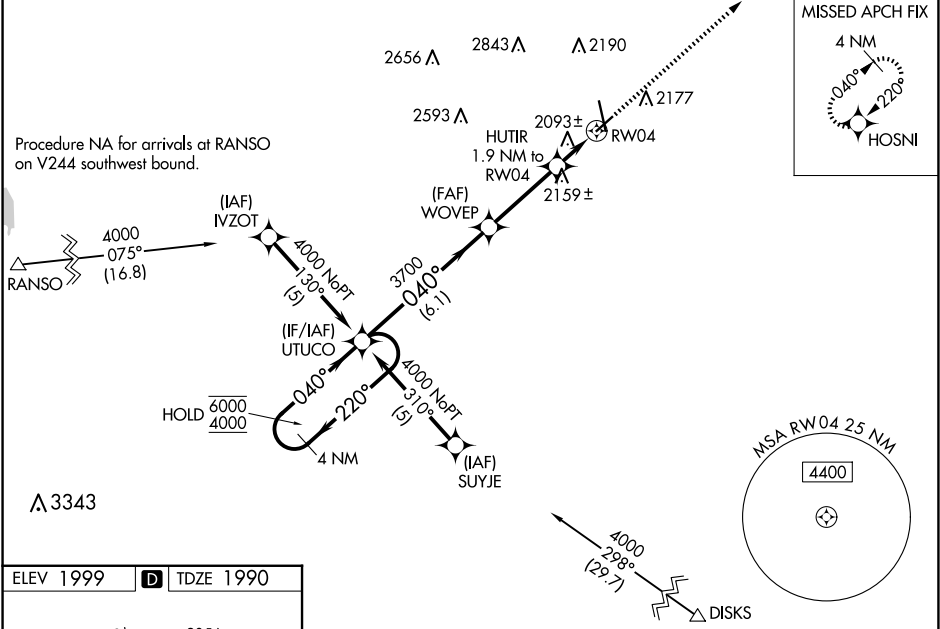
▼

▲

For uncompensated Baro-VNAV systems, LNAV/VNAV NA below -18°C or above 54°C. Baro-VNAV and VDP NA when using RSL altimeter setting. When local altimeter setting not received, use RSL altimeter setting: increase LPV DA to 2309 feet; increase LNAV/VNAV DA to 2459 feet and visibility all Cats ¼ SM; increase all MDA 80 feet and LNAV visibility Cat C/D ½ SM, and Circling visibility Cat C/D ¼ SM. Circling NA for Cat D northwest of Rwy 4 and west of Rwy 16.

MISSED APPROACH: Climb to 4000 direct HOSNI and hold.

AWOS-3PT 125.525	KANSAS CITY CENTER 124.4 322.4	UNICOM 122.8 (CTAF) 0
----------------------------	--	---------------------------------



<div>4 NM Holding Pattern</div> <div>UTUCO</div> <div>WOVEP</div> <div>HUTIR 1.9 NM to RW04</div> <div>4000</div> <div>HOSNI</div> <div>6000 ← 220°</div> <div>4000 → 040°</div> <div>040°</div> <div>3700</div> <div>2620</div> <div>1.2 NM to RW04</div> <div>RW04</div> <div>GP 3.00°</div> <div>TCH 40</div> <div>6.1 NM</div> <div>3.3 NM</div> <div>0.7</div> <div>1.2 NM</div>				
CATEGORY	A	B	C	D
LPV DA	2240-1 250 (300-1)			
LNAV/VNAV DA	2390-1½ 400 (400-1½)			
LNAV MDA	2420-1 430 (500-1)	2420-1¼ 430 (500-1¼)	2420-1½ 430 (500-1½)	
CIRCLING	2480-1 481 (500-1)	2560-1½ 561 (600-1½)	2680-2¼ 681 (700-2¼)	