


WAAS CH 78319 W34A	APP CRS 339°	Rwy Idg TDZE Apt Elev	6501 1994 1999
--	------------------------	-----------------------------	---

RNAV (GPS) RWY 34
HAYS RGNL (HYS)

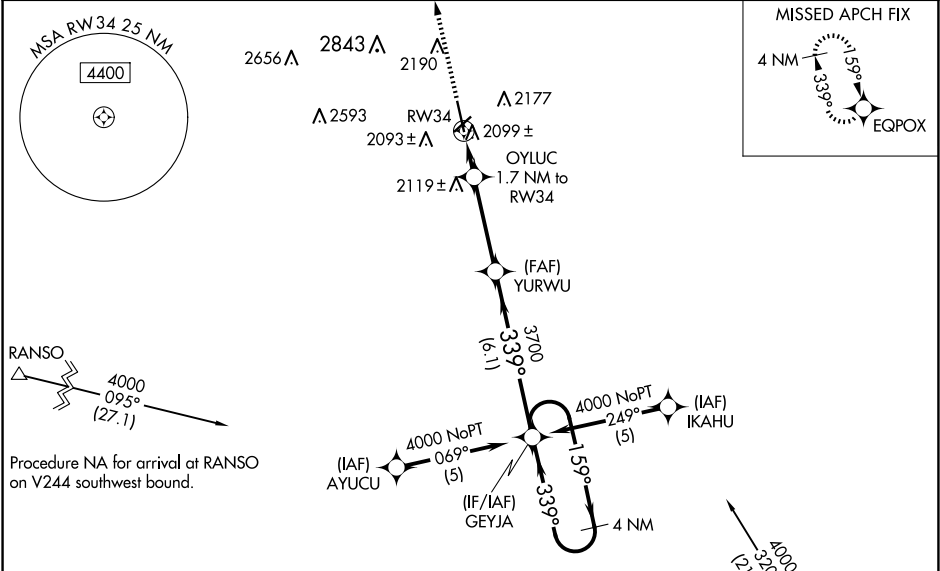
⚠ For uncompensated Baro-VNAV systems, LNAV/VNAV NA below -18°C (0°F) or above 45°C (113°F). DME/DME RNP-0.3 NA. When local altimeter setting not received, use Russell altimeter setting: increase LPV DA to 2263 feet; increase LNAV/VNAV DA to 2565 feet and visibility all Cats ¼ SM; increase all MDA 80 feet and visibility LNAV Cat C and Circling Cat C and D ¼ SM. Circling NA for Cat D northwest of Rwy 4 and west of Rwy 16. For inoperative MALSR when using Russell altimeter setting, increase LPV all Cats visibility to 1 mile. VDP and Baro-VNAV NA when using Russell altimeter setting.

MALSR



MISSED APPROACH:
Climb to 4000 direct EQPOX and hold.

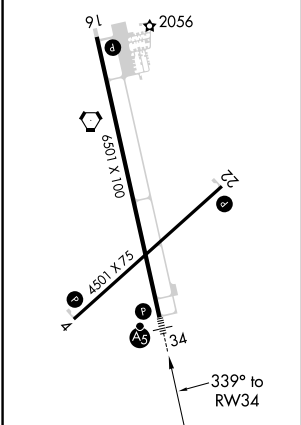
AWOS-3PT 125.525	KANSAS CITY CENTER 124.4 322.4	UNICOM 122.8 (CTAF) 0
----------------------------	--	---------------------------------



ELEV 1999 **D** TDZE 1994

MIRL Rwy 4-22 and 16-34 **1**

REIL Rwy 4, 22 and 16 **1**



4000	EQPOX	OYLUC 1.7 NM to RW34	YURWU 3700	GEYJA 4 NM Holding Pattern	4000
*LNAV only		*1.1 NM to RW34			
					GP 3.00° TCH 45
CATEGORY	A	B	C	D	
LPV DA	2194-½	200 (200-½)			
LNAV/VNAV DA	2496-1¼	502 (500-1¼)			
LNAV MDA	2380-½	386 (400-½)			2380-1 386 (400-1)
CIRCLING	2480-1	481 (500-1)	2560-1½ 561 (600-1½)	2680-2¼ 681 (700-2¼)	

NC-2, 10 JUL 2025 to 07 AUG 2025

NC-2, 10 JUL 2025 to 07 AUG 2025