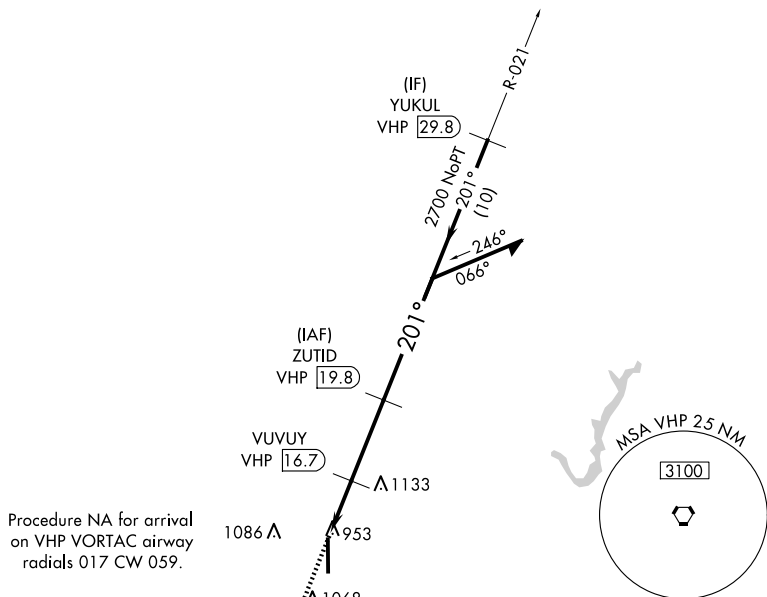



VOR RWY 18
INDIANAPOLIS EXEC (TYQ)


T
A Rwy 18 helicopter visibility reduction below $\frac{3}{4}$ SM NA.

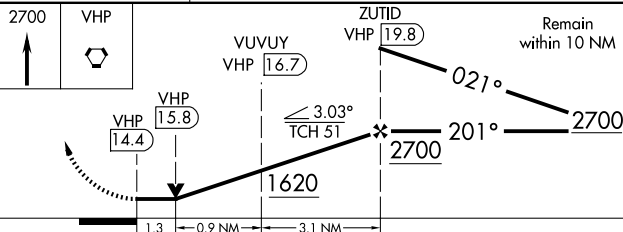
MISSED APPROACH: Climb to 2700 direct VHP VORTAC and hold.

UN|COM
123.05 (CTAF) **L**

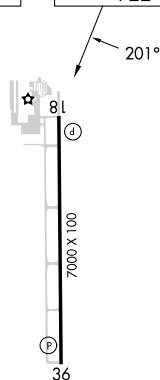


BRICKYARD
VHP 
116.3
Chan 110

BRICKYARD
116.3 VHP 
Chan 110



ELEV 922		TDZE 922
----------	--	----------



HIRL Rwy 18-36 **L**
REIL Rwy 18 and 36 **L**