

(ROCKY1.ROCKY) 23334  
ROCKY ONE DEPARTURE

AL-5438 (FAA)

INDIANAPOLIS EXEC (TYQ)  
INDIANAPOLIS, INDIANA

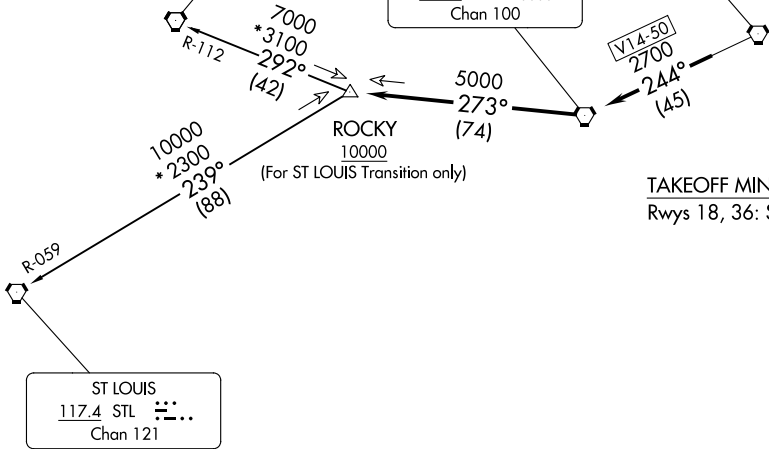
AWOS-3PT  
120.725  
INDIANAPOLIS DEP CON  
124.65 127.15 317.8

TOP ALTITUDE:  
ASSIGNED BY ATC

SPINNER  
112.7 SPI  
Chan 74

BRICKYARD  
116.3 VHP  
Chan 110

TERRE HAUTE  
115.3 TTH  
Chan 100



TAKEOFF MINIMUMS  
Rwys 18, 36: Standard.

- NOTE: RADAR required.  
NOTE: Select appropriate localizer/DME frequency/channel prior to departure.  
NOTE: Turbojets accelerate to 250K until reaching 10000, if unable advise ATC.  
NOTE: Assigned to aircraft with a requested altitude of 11000 or above.

NOTE: Chart not to scale.

DEPARTURE ROUTE DESCRIPTION

DEPARTING ALL OTHER AUTHORIZED RUNWAYS: Climb on assigned heading to assigned altitude. Thence . . . .

. . . . expect RADAR vectors to join VHP R-244 to TTH VORTAC, then via TTH R-273 to ROCKY INT then via transition or assigned route. Expect clearance to requested altitude ten minutes after departure.

SPINNER TRANSITION (ROCKY1.SPI): From over ROCKY INT on SPI R-112 to SPI VORTAC.  
ST LOUIS TRANSITION (ROCKY1.STL): From over ROCKY INT on STL R-059 to STL VORTAC.