

APP CRS	Rwy Idg	7000
182°	TDZE	922
	Apt Elev	922

RNAV (GPS) RWY 18
INDIANAPOLIS EXEC (TYQ)

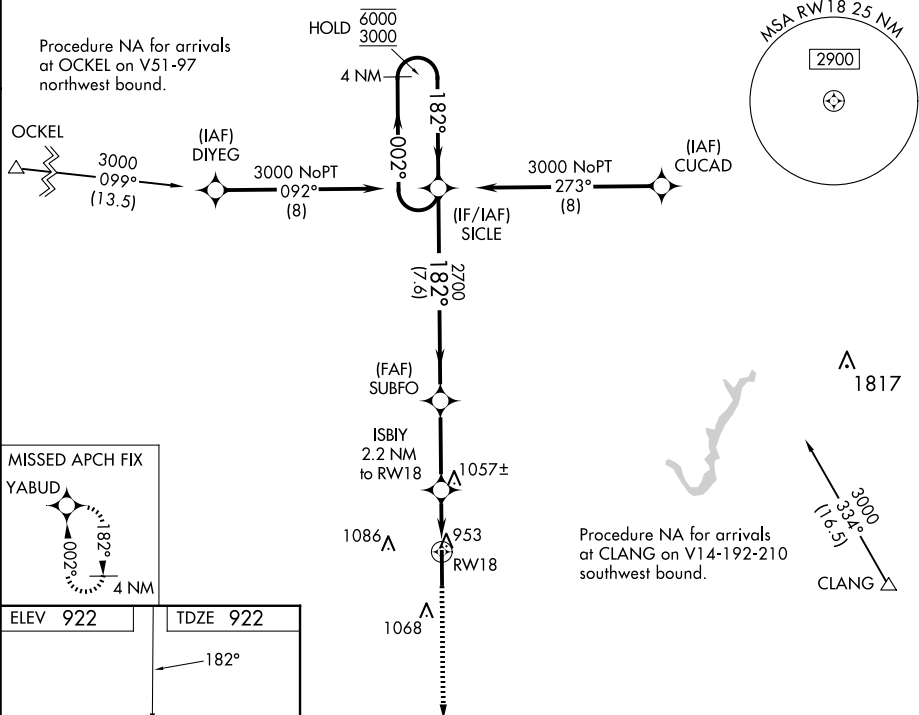
RNP APCH - GPS.

T Rwy 18 helicopter visibility reduction below $\frac{3}{4}$ SM NA. For uncompensated
A Baro-VNAV systems, LNAV/VNAV NA below -16°C or above 54°C.

MISSED APPROACH: Climb to 3000 direct YABUD and hold.

AWOS-3PT
120,725

INDIANAPOLIS APP CON
124.65 127.15 317.8

CLNC DEL
118.175UNICOM
123.05 (CTAF) **L**

ELEV 922

TDZE 922



HIRL Rwy 18-36 **L**
REIL Rwy 18 and 36 **L**

CATEGORY	A	B	C	D
LNAV/VNAV	DA	1216-7/8	294 (300-7/8)	
LNAV MDA	1320-1	398 (400-1)	1320-1 1/8	398 (400-1 1/8)
CIRCLING	1380-1	458 (500-1)	1440-1 1/2 518 (600-1 1/2)	1480-2 558 (600-2)