

WAAS CH 63014 W29A	APP CRS 290°	Rwy Idg TDZE Apt Elev	5101 1724 1730
--	------------------------	-----------------------------	---

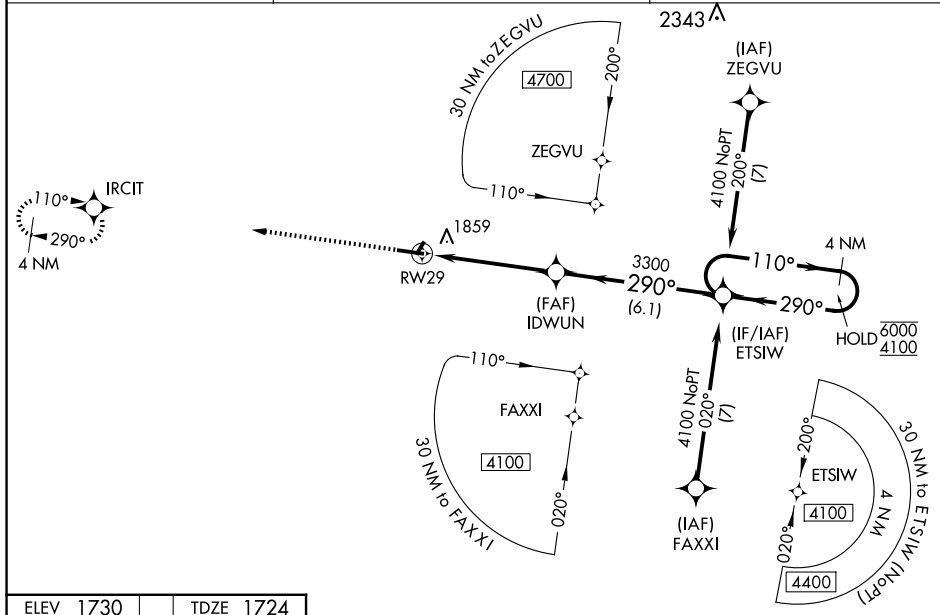
RNAV (GPS) RWY 29
SCHUYLKILL COUNTY/JOE ZERBEY (ZER)

RNP APCH - GPS

NA Circling NA to Rwy's 4 and 22, Baro-VNAV NA when using Selinsgrove altimeter setting. For uncompensated Baro-VNAV systems, LNAV/VNAV NA below -18°C or above 54°C. VDP NA when using Selinsgrove altimeter setting. When local altimeter setting not received, use Selinsgrove altimeter setting: increase LPV DA to 2156 feet and visibility ½ SM; LNAV/VNAV DA to 2376 feet and visibility ¾ SM; increase all MDAs 240 feet and visibility LNAV Cts C/D ¾ SM and Circling Cts C/D ½ SM.

MISSED APPROACH:
Climb to 4000 direct
IRCIT and hold.

AWOS-3 127.575	HARRISBURG APP CON 118.25 269.45	UNICOM 123.075 (CTAF) 0
--------------------------	--	-----------------------------------

[illegible]REIL Rwy 11 and 29 L
MIRL Rwy 11-29 I