

WAAS
CH **61214**
W11A

APP CRS
110°

Rwy Idg
TDZE
Apt Elev
5101
1730
1730

RNAV (GPS) RWY 11

SCHUYLKILL COUNTY/JOE ZERBEY (Z·ER)

RNP APCH.

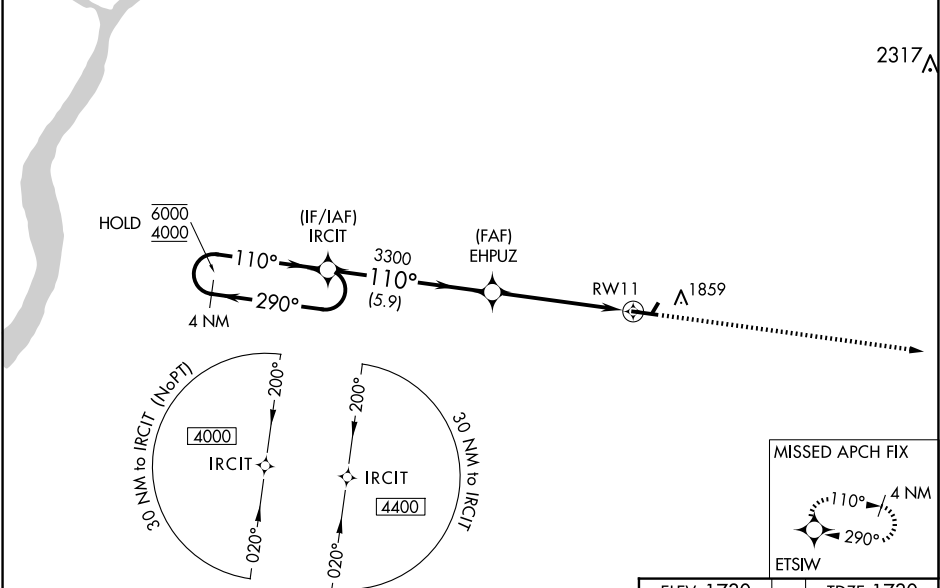
▼

▲ NA

Circling NA to Rws 4 and 22. Baro-VNAV NA when using Selinsgrove altimeter setting. For uncompensated Baro-VNAV Systems, LNAV/VNAV NA below -18°C or above 54°C. When local altimeter setting not received, use Selinsgrove altimeter setting and increase LPV DA to 2191 feet, LNAV/VNAV DA to 2281 feet and all MDAs 280 feet. Increase LPV all Cats visibility $\frac{5}{8}$ SM, LNAV/VNAV all Cats visibility $\frac{3}{4}$ SM, LNAV Cats C/D visibility $\frac{3}{8}$ SM and Circling Cats C/D visibility $\frac{3}{4}$ SM. VDP NA when using Selinsgrove altimeter setting.

MISSED APPROACH:
Climb to 4000 direct
ETSIW and hold.

AWOS-3 127.575	HARRISBURG APP CON 118.25 269.45	UNICOM 123.075 (CTAF) 0
--------------------------	--	-----------------------------------



4 NM Holding Pattern

IRCIT

6000 4000

290° 110°

GP 3.00° TCH 42

EHPUZ

3400

5.9 NM 3.7 NM 1.4 NM

4000

ETSIW

*1.4 NM to RW11

*LNAV only.

RW11

110°

5101 X 75

0.5% UP

29°

CATEGORY	A	B	C	D
LPV DA	1930- $\frac{3}{4}$ 200 (200- $\frac{3}{4}$)			
LNAV/ DA VNAV	2020- $\frac{7}{8}$ 290 (300- $\frac{7}{8}$)			
LNAV MDA	2200-1 470 (500-1)		2220-1 $\frac{3}{8}$ 470 (500-1 $\frac{3}{8}$)	
CIRCLING	2200-1 470 (500-1)		2220-1 $\frac{1}{2}$ 490 (500-1 $\frac{1}{2}$) 2280-2 550 (600-2)	

REIL Rws 11 and 29 0

MIRL Rwy 11-29 0