

WAAS CH 70703 W27A	APP CRS 273°	Rwy Idg TDZE Apt Elev	5001 738 738
--	------------------------	-----------------------------	---

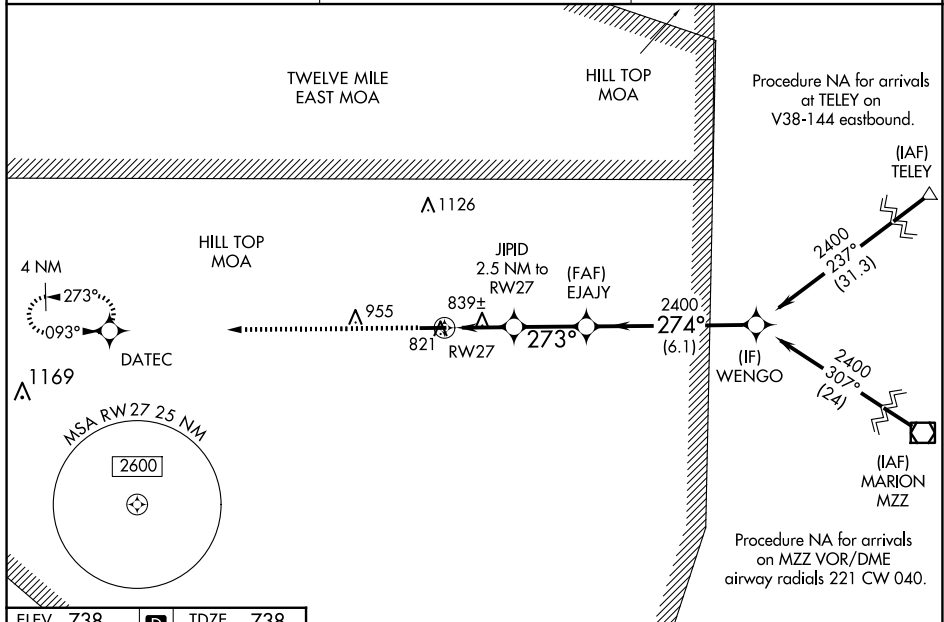
RNAV (GPS) RWY 27

T Baro-VNAV NA when using Grissom ARB altimeter setting. For uncompensated Baro-VNAV systems, LNAV/VNAV NA below -16°C (4°F) or above 39°C (102°F). DME/DME RNP-0.3 NA.

A **NA** VDP NA with Grissom ARB altimeter setting. When local altimeter setting not received, use Grissom ARB altimeter setting: increase LPV DA to 974 feet; increase LNAV/VNAV DA to 1056 feet and all visibilities $\frac{1}{4}$ SM; increase all MDAs 40 feet and Circling visibility Cat D $\frac{1}{4}$ SM.

MISSED APPROACH:
Climb to 2500 direct
DATEC and hold

AWOS-3P 118.5	GRISCOM APP CON★ 121.05 338.275	UNICOM 122.8 (CTAF) 0
-------------------------	---	---------------------------------



ELEV 738	D	TDZE 738
----------	----------	----------

