

LA PORTE, TEXAS

AL-5433 (FAA)

23166

WAAS CH 93928 W30A	APP CRS 301°	Rwy Idg 3760 TDZE 25 Apt Elev 25
----------------------------------------	------------------------	-------------------------------------------------------------

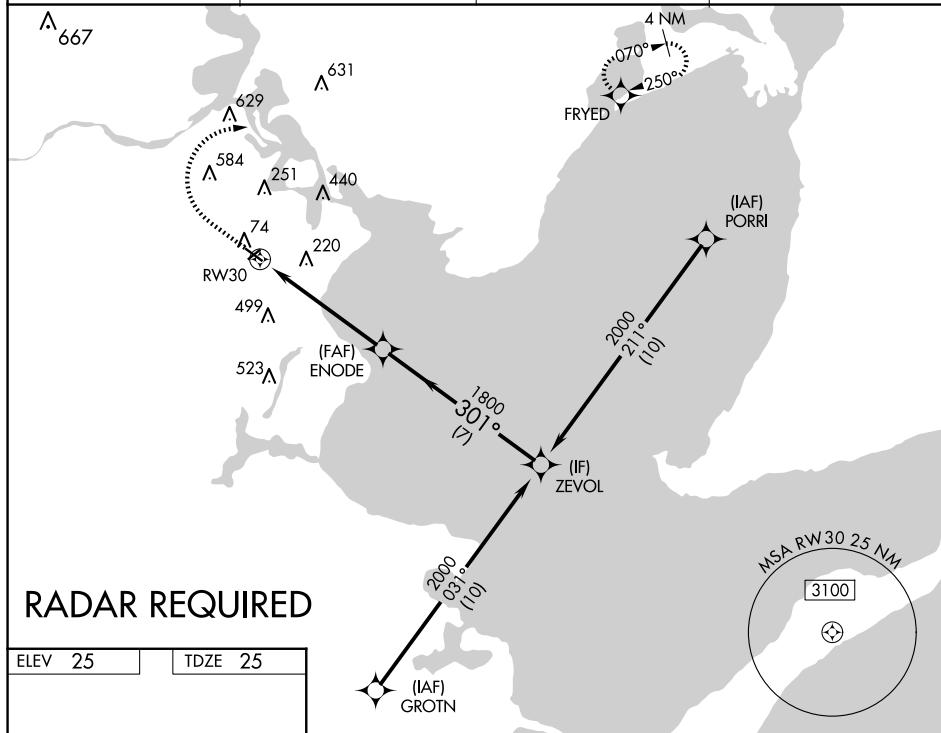
RNAV (GPS) RWY 30
LA PORTE MUNI (T41)

RNP APCH.

T Baro-VNAV NA. Use Ellington altimeter setting. Rwy 30 helicopter visibility
A NA reduction below $\frac{3}{4}$ SM NA. Circling Rwy 5, 23 NA at night.

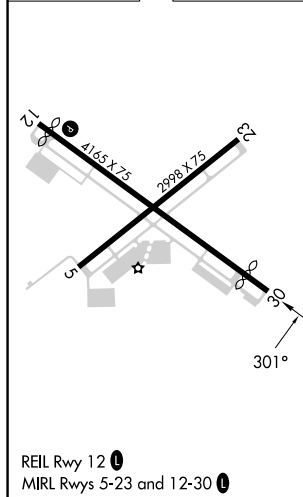
MISSED APPROACH: Climb to 600 then climbing right turn to 2000 direct FRYED and hold.

AWOS-3PT 120.275	HOUSTON APP CON 134.45 284.0	CLNC DEL 125.6	UNICOM 122.7 (CTAF) 0
----------------------------	----------------------------------------	--------------------------	---------------------------------



RADAR REQUIRED

ELEV 25		TDZE 25
---------	--	---------



LA PORTE, TEXAS

Amdt 2D 04NOV21

29°40'N-95°04'W

LA PORTE MUNI (T41)

RNAV (GPS) RWY 30

SC-5, 10 JUL 2025 to 07 AUG 2025

SC-5, 10 JUL 2025 to 07 AUG 2025