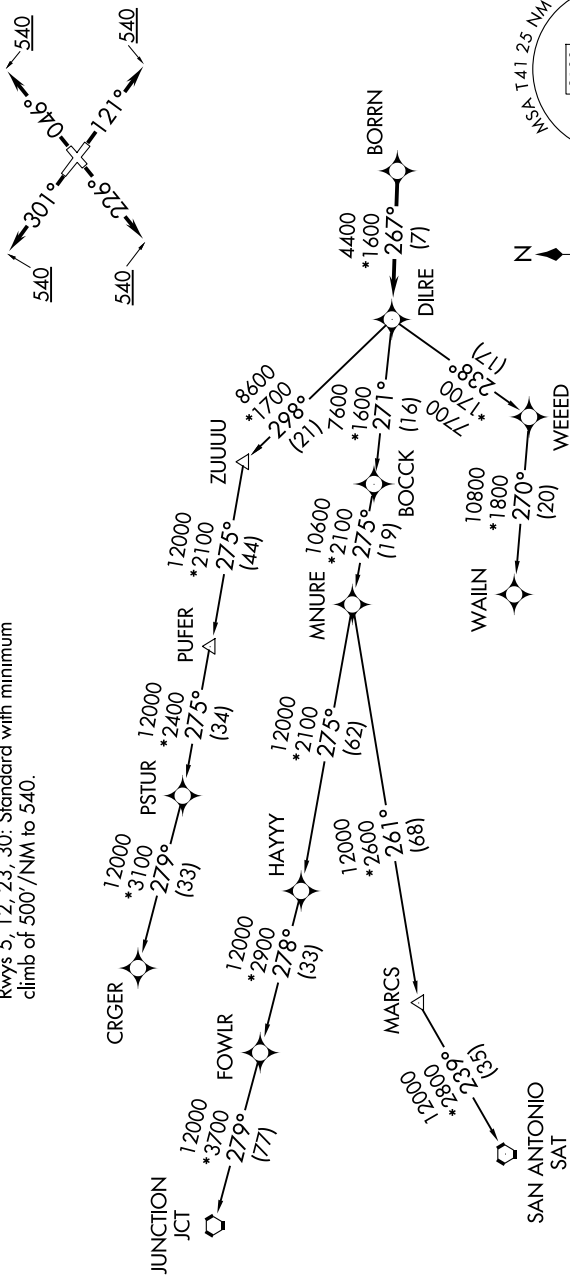


LA PORTE MUNI (T41)

**TOP ALTITUDE:
ASSIGNED BY ATC**

Rwys 5, 12, 23, 30: Standard with minimum climb of 500'/NM to 540.



NOTE: CRGR-TRANSITION ATC assigned only for aircraft departing 54T, AXH, EFD, GLS, HPY, IWS, LBX, LVJ, SGR, TME, T00, T41.

(CONTINUED ON FOLLOWING PAGE)

NOTE: Chart not to scale.