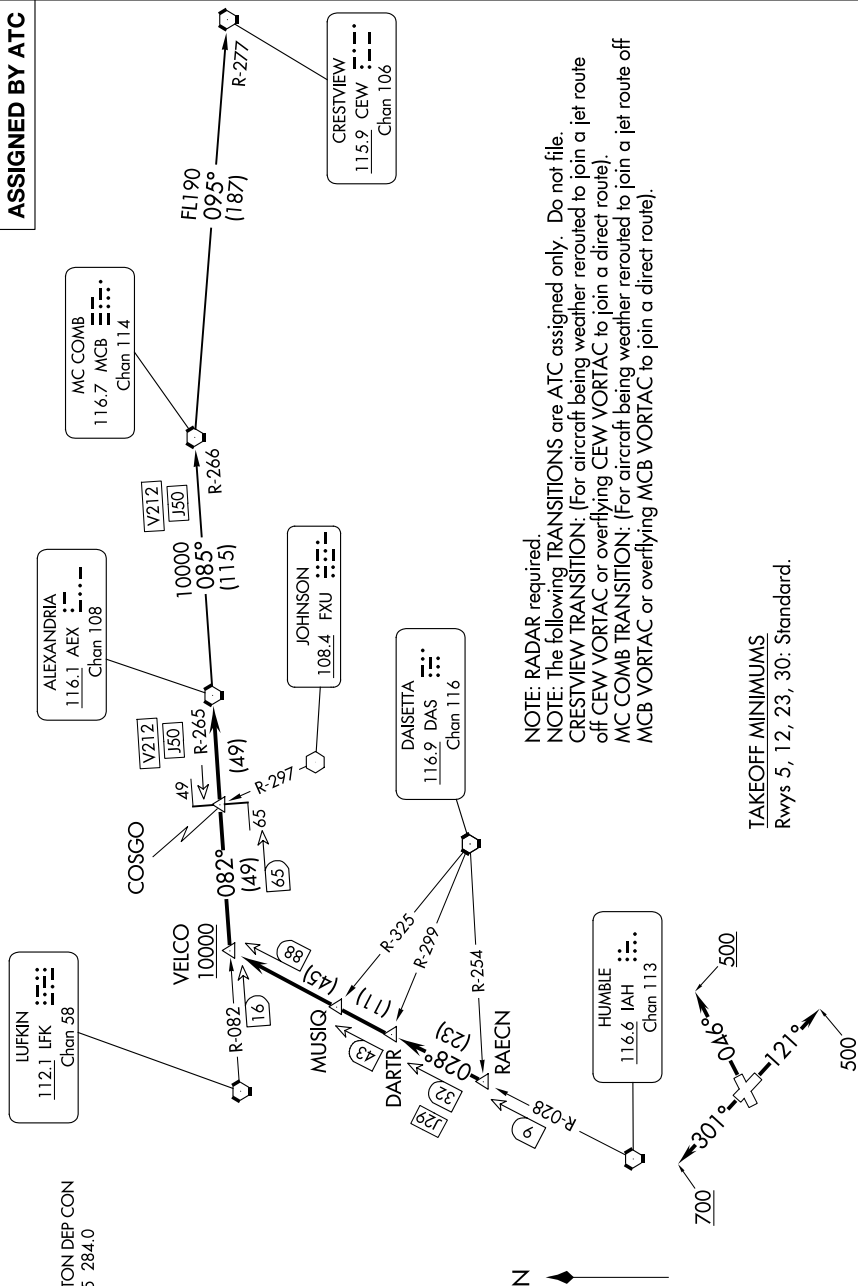


# ALEXANDRIA THREE DEPARTURE

CINC DEL  
125.6  
CTAF  
122.7  
HOUSTON  
134.45 28

**TOP ALTITUDE:  
ASSIGNED BY ATC**



NOTE: RADAR required.

NOTE: The following TRANSITIONS are ATC assigned only. Do not file.

CRESTVIEW TRANSITION: (For aircraft being weather routed to join a jet route off CEW VORTAC or overflying CEW VORTAC to join a direct route).

MCCOMB TRANSITION: (For aircraft being weather routed to join a jet route off MCB VORTAC or overflying MCB VORTAC to join a direct route).

## TAKEOFF MINIMUMS

Rwys 5, 12, 23, 30: Standard.

NOTE: Chart not to scale.

(CONTINUED ON FOLLOWING PAGE)

SC-5, 10 JUL 2025 to 07 AUG 2025

ALEXANDRIA THREE DEPARTURE

(AEX3.AEX) 07OCT21

LA PORTE, TEXAS

### LA PORTE MUNI (T41)