

APP CRS	Rwy Ldg	4899
083°	TDZE	634
	Apt Elev	634

RNAV (GPS) RWY 8

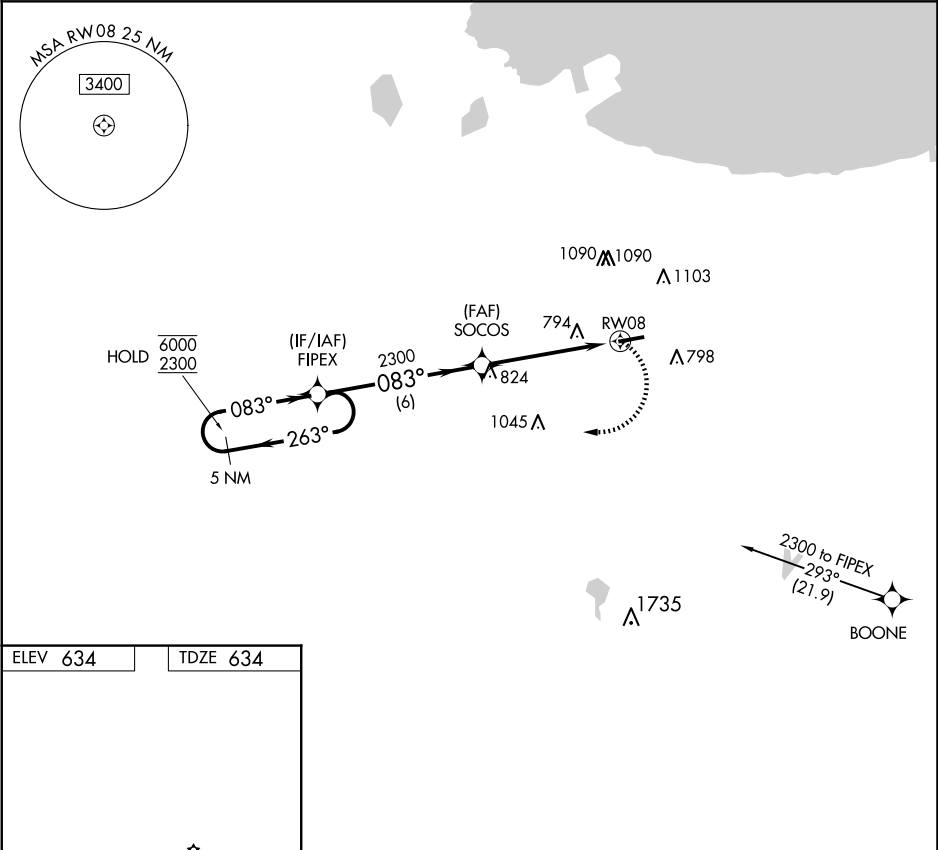
GRIFFITH-MERRILLVILLE (05C)

RNP APCH - GPS

Procedure NA at night. Obtain local altimeter setting on CTAF; when not received, use Chicago Midway Intl altimeter setting and increase all MDAs 60 feet. Rwy 8 helicopter visibility reduction below 1 SM NA.

MISSED APPROACH: Climbing right turn to 2300 direct FIPEX and hold.

CHICAGO APP CON 133.1 285.6	UNICOM 123.0 (CTAF) 0
--------------------------------	--------------------------



ELEV 634

TDZE 634

REIL Rwy 8 and 26 0

MIRL Rwy 8-26 0

5 NM Holding Pattern				VGSI and descent angles not coincident (VGSI Angle 3.50/TCH 44).		2300	FIPEX
CATEGORY				A		B	
LNAV MDA				1080-1		446 (500-1)	
CIRCLING				1200-1		566 (600-1)	
				C		D	
				NA		NA	