

GRIFFITH, INDIANA

AL-5431 (FAA)

25163

APP CRS <b>263°</b>	Rwy Ldg <b>3779</b> TDZE <b>632</b> Apt Elev <b>634</b>
------------------------	---

## RNAV (GPS) RWY 26

GRIFFITH-MERRILLVILLE (05C)

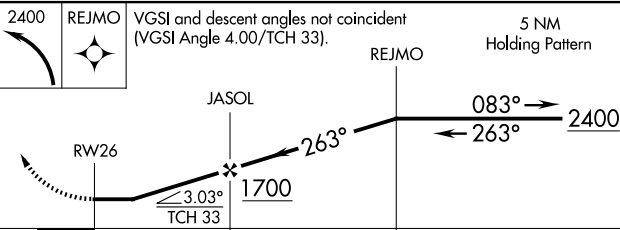
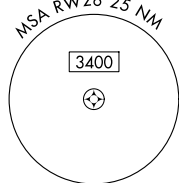
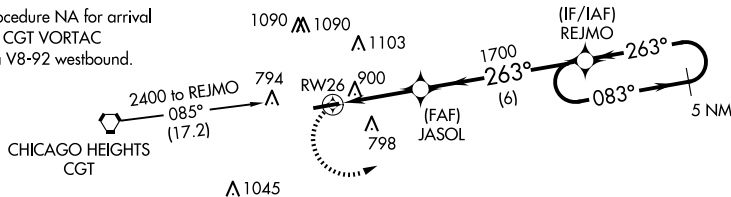
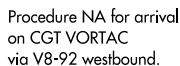
RNP APCH.


<b>T</b>	Obtain local altimeter setting on CTAF; when not received use Chicago Midway
<b>A</b> NA	Intl altimeter setting and increase all MDAs 60 feet. Visibility reduction by helicopters NA. Procedure NA at night.

**MISSED APPROACH:** Climbing left turn to 2400 direct REJMO and hold.

CHICAGO APP CON  
133.1 285.6

UNICOM  
123.0 (CTAF) **L**



CATEGORY	3.21NM		6.1NM	
	A	B	C	D
LNNAV MDA	1160-1	528 (600-1)		NA
 CIRCLING	1200-1	566 (600-1)		NA

ELEV 634

TDZE 632

4899 X 75

263°

REIL Rwy 8 and 26

MIRL Rwy 8-26

GRIFFITH, INDIANA  
Orig-B 05NOV20

41°31'N-87°24'W

GRIFFITH-MERRILLVILLE (Ø5C)  
RNAV (GPS) RWY 26

EC-2, 10 JUL 2025 to 07 AUG 2025