

APP CRS
201°

Rwy Ldg
TDZE
Apt Elev

5500
1021
1021

RNAV (GPS) RWY 20

ALEXANDER FLD SOUTH WOOD COUNTY (ISW)

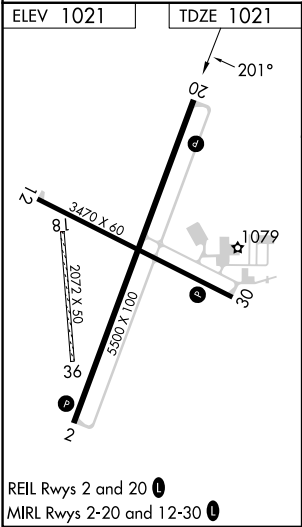
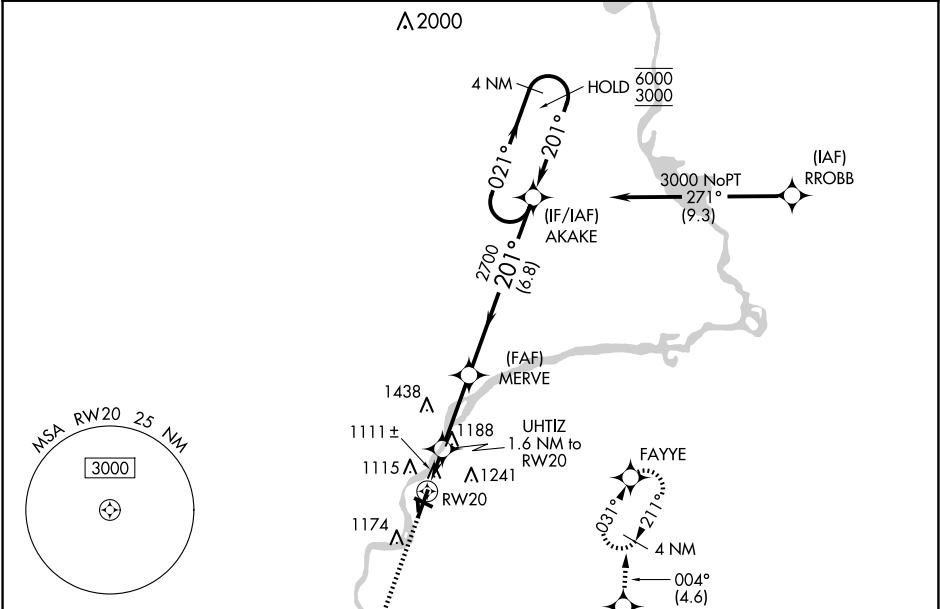
RNP APCH.

▼

Circling NA to Rwy 18 and 36.
Rwy 20 helicopter visibility reduction below 1 SM NA.
▲ Straight-in Rwy 20 NA at night, Circling Rwy 20, 30 NA at night.

MISSED APPROACH: Climb to 3000 direct WEMUG and on track 117° to OCEDE and on track 049° to LHALL and on track 004° to FAYYE and hold.

ASOS 126.575	MINNEAPOLIS CENTER 124.4 317.7	UNICOM 122.8 (CTAF) 1
-----------------	-----------------------------------	--------------------------



3000	WEMUG	tr 117°	OCEDE	tr 049°	LHALL	tr 004°	FAYYE	4 NM Holding Pattern
			UHTIZ 1.6 NM to RW20		MERVE		AKAKE	
			1640		2700			
			1.6 NM		2.8 NM		6.8 NM	
CATEGORY	A	B	C	D				
LNAV MDA	1380-1 359 (400-1)							
CIRCLING	1480-1 459 (500-1)	1560-1 539 (600-1)	1740-2 719 (800-2)	1800-2½ 779 (800-2½)				