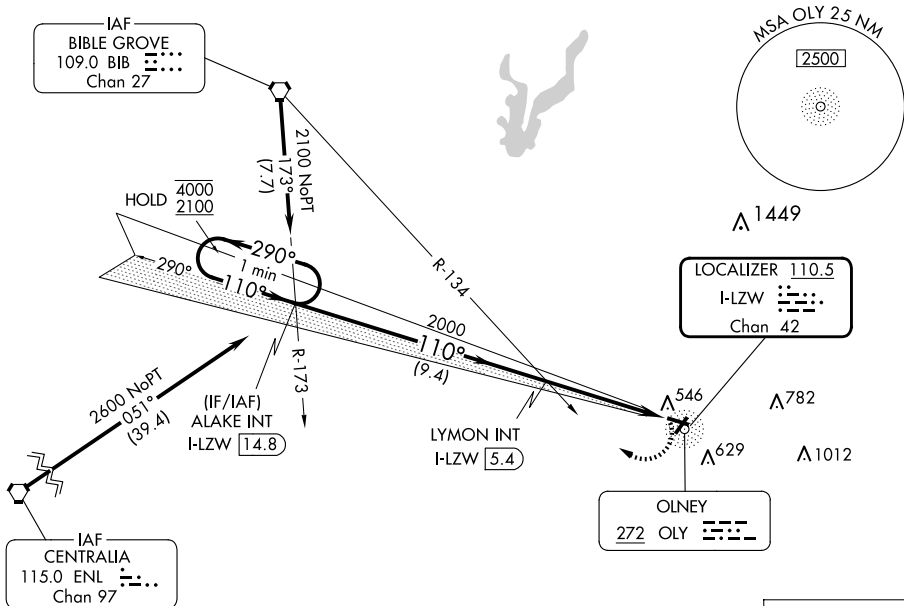


LOC RWY 11
OLNEY-NOBLE (OLY)



MISSED APPROACH: Climbing right turn to 2400 on heading 290° and BIB VORTAC R-173 to ALAKE INT/I-LZW LOC/DME 14.8 DME and hold.

UNICOM
123.0 (CTAF)

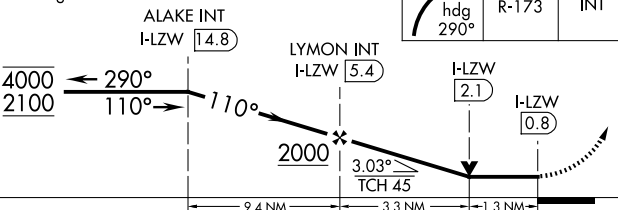
REIL Rwy 4 and 11 **L**
MIRL Rwy 4-22 and 11-28 **L**

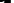
FAF to MAP 4.6 NM					
Knots	60	90	120	150	180
Min:Sec	4:36	3:04	2:18	1:50	1:32

OLNEY-NOBLE, ILLINOIS


Amdt 7 19MAY22


One Minute Holding Pattern



CATEGORY	A	B	C	D
S-11	920-1	438 (500-1)	920-1½	438 (500-1½)
 CIRCLING	920-1 438 (500-1)	940-1 458 (500-1)	960-1½ 478 (500-1½)	1180-2¼ 698 (700-2¼)

ALTERNATE MISSED
APCH FIX

BIBLE
GROVE
BIB 
109.0
Chan 27



2400 hdg 290°	BIB R-173	ALAKE INT
---------------------	--------------	--------------

38°43'N-88°11'W

OLNEY-NOBLE (OLY)
LOC RWY 11