

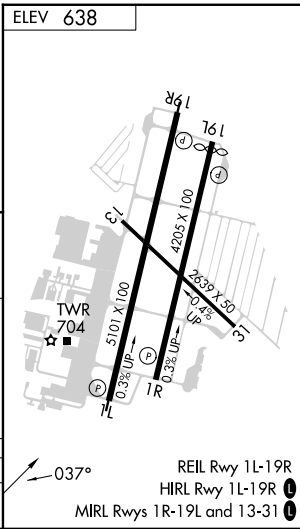
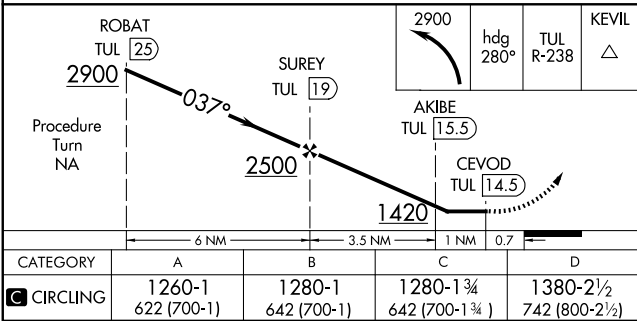
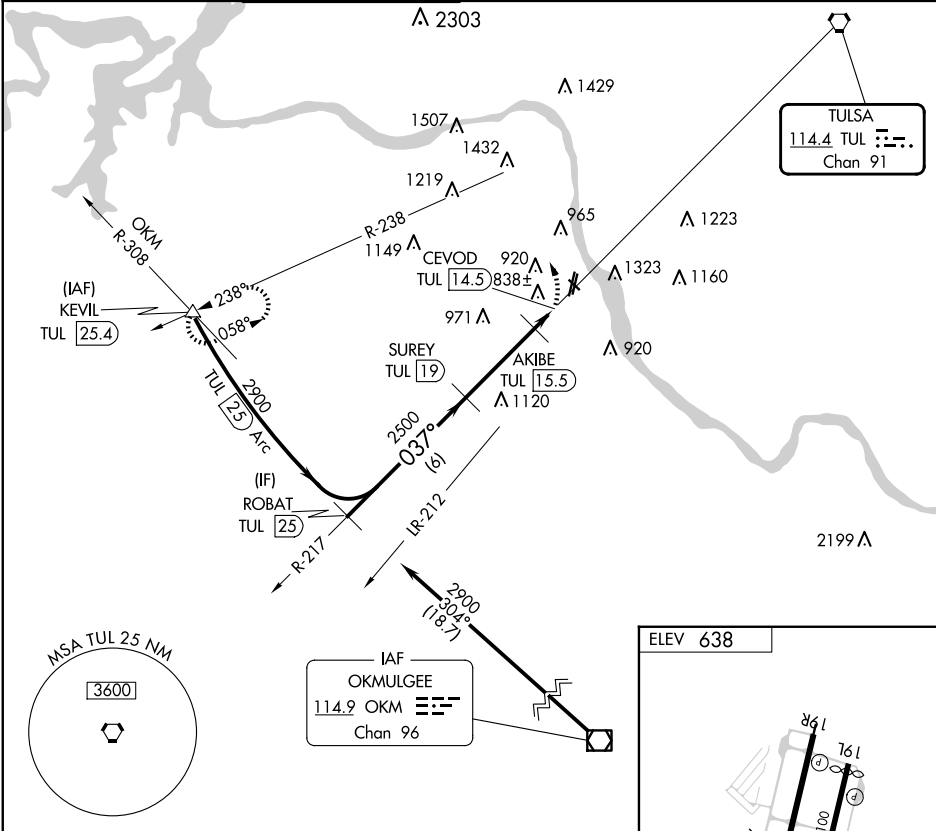
VORTAC TUL	APP CRS	Rwy Idg	N/A
114.4	037°	TDZE	N/A
Chan 91		Apt Elev	638

VOR/DME-A
TULSA RIVERSIDE (RVS)

V Circling NA northeast of Rwys 31 and 19L. When local altimeter setting not received, use Tulsa Intl altimeter setting and increase MDA 40 feet; increase Cat C/D visibilities ¼ mile.

A MISSED APPROACH: Climbing left turn to 2900 via heading 280° and TUL R-238 to KEVIL Int/TUL 25.4 DME and hold.

ATIS	TULSA APP CON	RIVERSIDE TOWER *	GND CON	CLNC DEL	UNICOM
126.5	134.7	120.3 (CTAF) 0	121.7	124.5	122.95



SC-1, 10 JUL 2025 to 07 AUG 2025

SC-1, 10 JUL 2025 to 07 AUG 2025