

LOC/DME I-RVS	APP CRS	Rwy Idg	5101
109.95	010°	TDZE	626
Chan 36 (Y)		Apt Elev	638

ILS or LOC RWY 1L
TULSA RIVERSIDE (RVS)

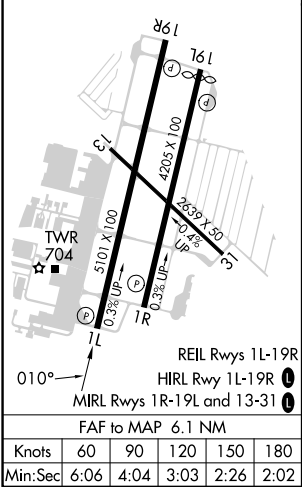
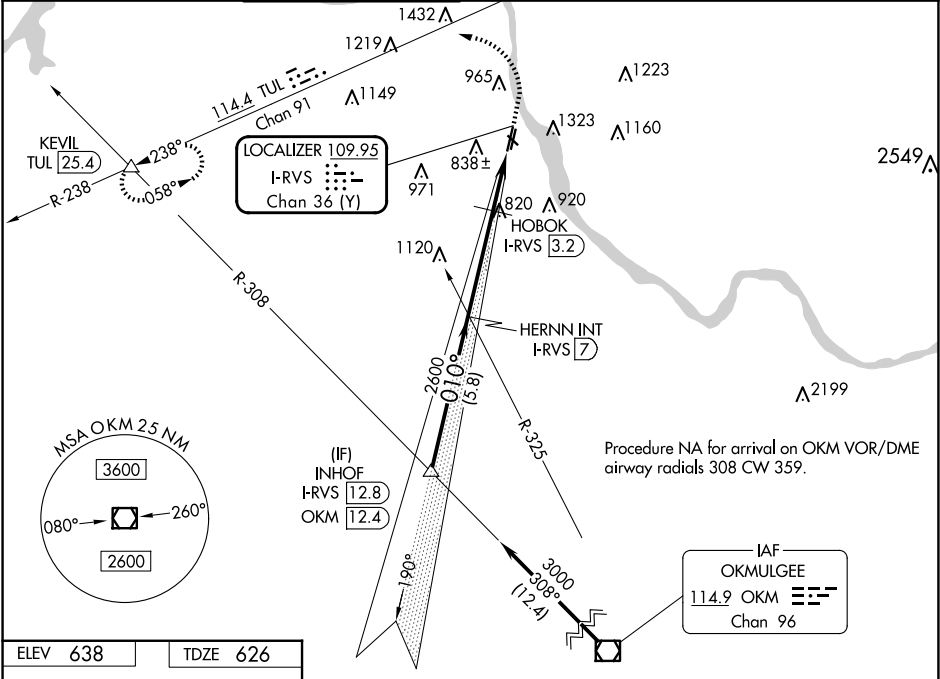
⚠

⚠

Circling NA northeast of Rwy 31 and 19L.

MISSED APPROACH: Climb to 1500 then climbing left turn to 2600 on heading 280° and TUL VORTAC R-238 to KEVIL INT/TUL 25.4 DME and hold.

ATIS 126.5	TULSA APP CON 134.7	RIVERSIDE TOWER★ 120.3 (CTAF) 0	GND CON 121.7	CLNC DEL 124.5	UNICOM 122.95
---------------	------------------------	------------------------------------	------------------	-------------------	------------------



<div><div>INHOF I-RVS 12.8</div><div>HERNN INT I-RVS 7</div><div>3000</div><div>GS 3.00° TCH 48</div><div>010°</div><div>2600</div><div>1380</div><div>5.8 NM</div><div>3.8 NM</div><div>1 NM</div><div>1.3 NM</div><div>1500</div><div>2600</div><div>hdg 280°</div><div>TUL R-238</div><div>KEVIL</div></div>				
CATEGORY	A	B	C	D
S-ILS 1L	826-3/4 200 (200-3/4)			
S-LOC 1L	1380-1 754 (800-1)	1380-1 754 (800-1 1/4)	1380-2 754 (800-2)	
CIRCLING	1380-1 742 (800-1)	1380-1 742 (800-1 1/4)	1380-2 742 (800-2 1/4)	1380-2 742 (800-2 1/2)
HOBOK FIX MINIMUMS				
S-LOC 1L	1080-1 454 (500-1)	1080-1 454 (500-1 1/2)	454 (500-1 3/8)	
CIRCLING	1260-1 622 (700-1)	1280-1 642 (700-1)	1280-1 642 (700-1 1/4)	1380-2 742 (800-2 1/2)

SC-1, 10 JUL 2025 to 07 AUG 2025

SC-1, 10 JUL 2025 to 07 AUG 2025