

WAAS CH <b>61032</b> <b>W30A</b>	APP CRS <b>305°</b>	Rwy Idg TDZE <b>1056</b> Apt Elev <b>1060</b>
--	------------------------	---

RNAV (GPS) RWY 30

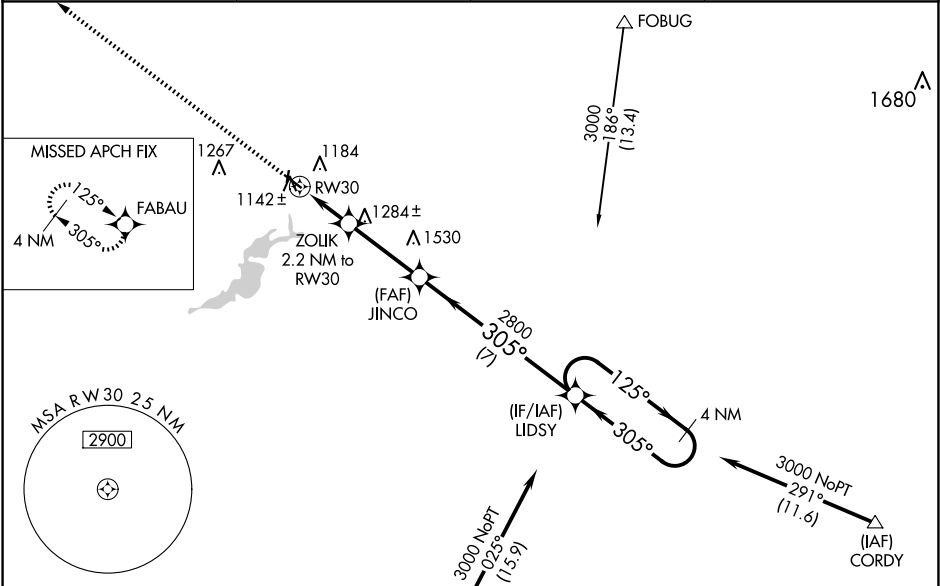
FARIBAULT MUNI-LIZ WALL STROHFUS FLD (F'BL)

⚠

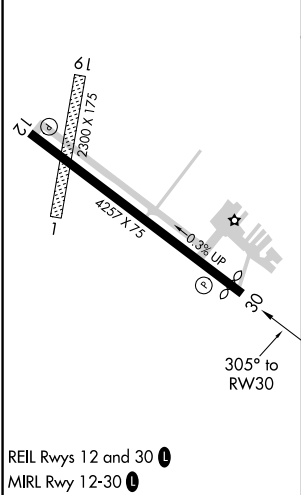
For uncompensated Baro-VNAV systems, LNAV/VNAV NA below -17°C (2°F) or above 54°C (130°F). DME/DME RNP-0.3 NA. When local altimeter setting not received, use Owatonna altimeter setting and increase all DA 41 feet and all MDA 60 feet; increase LNAV Cat C visibility 1/8 mile. Baro-VNAV and VDP NA when using Owatonna altimeter setting. Circling NA to Rwy's 1 and 19.

MISSED APPROACH: Climb to 3000 direct FABAU and hold.

AWOS-3 <b>120.2</b>	MINNEAPOLIS APP CON <b>134.7 284.7</b>	GCO <b>121.725</b>	UNICOM <b>122.8 (CTAF)</b> <b>0</b>
------------------------	---	-----------------------	--



ELEV 1060	TDZE 1056
-----------	-----------



3000

FABAU

↑

✴

\*LNAV only

LIDSY

4 NM Holding Pattern

125° →

← 305°

3000

JINCO

2800

ZOLIK

2.2 NM to RW30

\*1 NM to RW30

1780\*

305°

2800

GP 3.00°

TCH 40

1 NM

1.2

3.2 NM

7 NM

CATEGORY	A	B	C	D
LPV DA	1306-1	250 (300-1)		NA
LNAV/VNAV DA	1306-1	250 (300-1)		NA
LNAV MDA	1400-1	344 (400-1)		NA
CIRCLING	1520-1	460 (500-1)	1740-2 680 (700-2)	NA

NC-1, 10 JUL 2025 to 07 AUG 2025

NC-1, 10 JUL 2025 to 07 AUG 2025