

WAAS CH 65941 W05A	APP CRS 045°	Rwy Idg 5287 TDZE 927 Apt Elev 927
--	------------------------	---

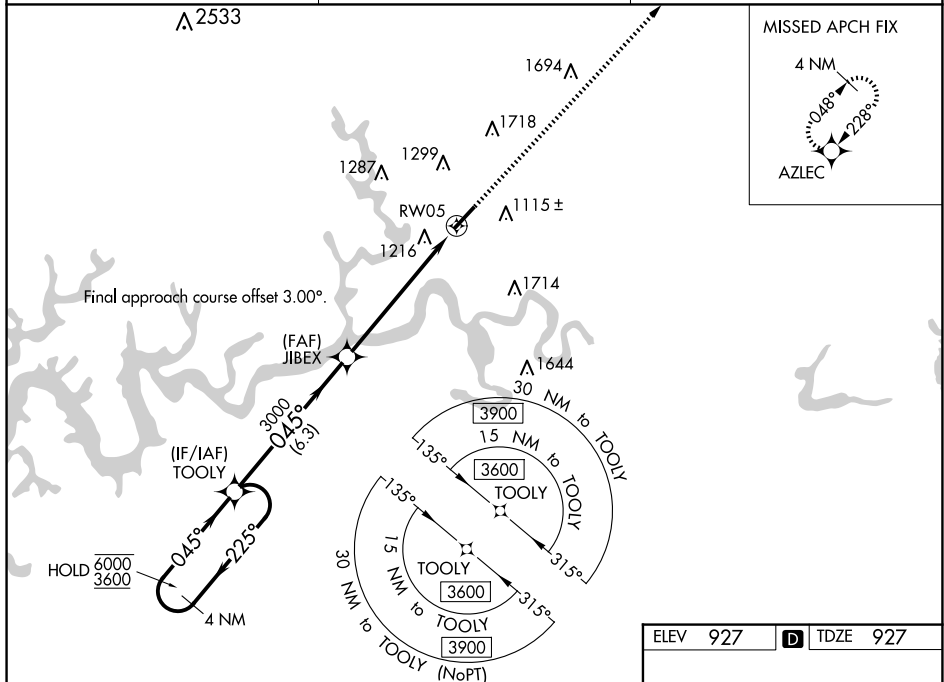
RNAV (GPS) RWY 5
LAKE CUMBERLAND RGNL (SME)

RNP APCH - GPS

⚠ Rwy 5 helicopter visibility reduction below $\frac{3}{4}$ SM NA. For uncompensated Baro-VNAV systems, LNAV/VNAV NA below -16°C or above 54°C. Baro-VNAV and VDP NA when using Monticello altimeter setting. When local altimeter setting not received, use Monticello altimeter setting and increase LPV DA to 1221 feet, increase LNAV/VNAV DA to 1591 feet. Increase LPV and LNAV/VNAV visibilities all Cats $\frac{1}{2}$ SM. Increase all MDAs 60 feet, increase LNAV Cat C and D visibility $\frac{1}{2}$ SM, and Circling Cat B $\frac{1}{4}$ SM.

MISSED APPROACH:
Climb to 3600 direct
AZLEC and hold.

AWOS-3 120.05	INDIANAPOLIS CENTER 124.625 371.925	UNICOM 122.8 (CTAF) 0
-------------------------	---	---------------------------------



4 NM Holding Pattern

VGSI and RNAV glidepath not coincident
(VGSI Angle 3.00/TCH 60).

TOOLY

JIBEX

RW05

3600

3600

225°

045°

045°

3000

1.6 NM to RW05

GP 3.12° TCH 52

6.3 NM

4.6 NM

1.6 NM

CATEGORY	A	B	C	D
LPV DA		1177- ³ / ₄	250 (300- ³ / ₄)	
LNAV/VNAV DA		1547-1 ³ / ₄	620 (700-1 ³ / ₄)	
LNAV MDA	1480-1	553 (600-1)	1480-1 ⁵ / ₈	553 (600-1 ⁵ / ₈)
CIRCLING	1580-1 653 (700-1)	1700-1 773 (800-1)	2100-3	1173 (1200-3)

