

WAAS CH 48936 W31A	APP CRS 306°	Rwy Idg TDZE 973 Apt Elev 975	5007
--	------------------------	---	-------------

RNAV (GPS) RWY 31

MARSHALLTOWN MUNI (MIW)

RNP APCH.

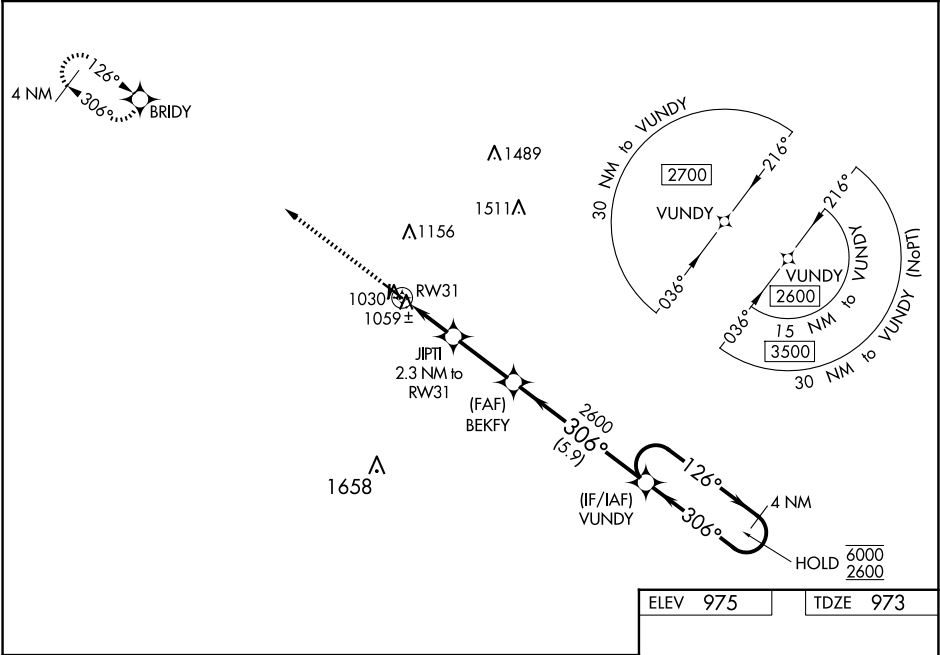
▼

▲

Baro-VNAV and VDP NA when using Grinnell altimeter setting. Rwy 31 Helicopter visibility reduction below ¾ SM NA. For uncompensated Baro-VNAV systems, LNAV/VNAV NA below -22°C or above 54°C. When local altimeter setting not received, use Grinnell altimeter setting and increase all DA 64 feet and all MDA 80 feet; increase LPV and LNAV/VNAV all Cats visibility ½ SM and LNAV Cats C/D and Circling Cat D visibility ¼ SM. Circling Rwy 18, 36 NA at night.

MISSED APPROACH:
Climb to 2700 direct BRIDY and hold.

ASOS 128.325	WATERLOO APP CON * 120.9	CLNC DEL 120.9	UNICOM 122.8 (CTAF) 0
------------------------	------------------------------------	--------------------------	--



2700 BRIDY		BEKFY 2600		VUNDY 2600		4 NM Holding Pattern	
*LNAV only		JIPTI 2.3 NM to RW31		126° 306°		6000 2600	
RW31		*1 NM to RW31		1740*		GP 3.00° TCH 37	
-1 NM		1.3 NM		2.7 NM		5.9 NM	
CATEGORY		A	B	C	D		
LPV DA			1223-1	250 (300-1)			
LNAV/VNAV DA			1223-1	250 (300-1)			
LNAV MDA			1320-1	347 (400-1)			
CIRCLING		1400-1 425 (500-1)	1440-1 465 (500-1)	1460-1½ 485 (500-1½)	1840-2¾ 865 (900-2¾)		

