

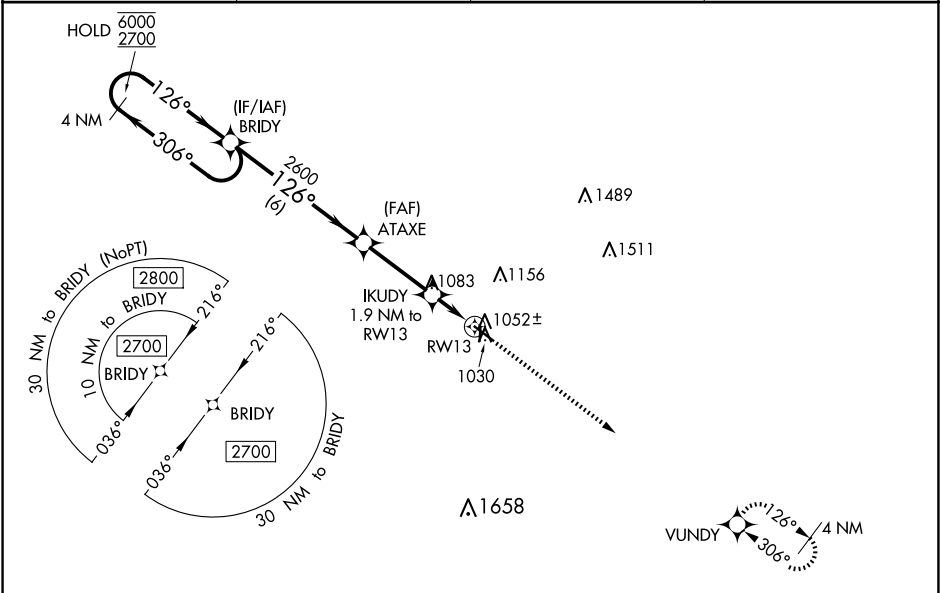
WAAS CH 50236 W13A	APP CRS 126°	Rwy Idg TDZE Apt Elev	5007 975 975
--	------------------------	-----------------------------	---

RNAV (GPS) RWY 13

MARSHALLTOWN MUNI (MIW)

RNP APCH.	<div><div>⚠</div><div>Circling Rwy 18, 36 NA at night. Baro-VNAV and VDP NA when using Grinnell altimeter setting. For uncompensated Baro-VNAV systems, LNAV/VNAV NA below -21°C or above 54°C.</div><div>⚠</div><div>When local altimeter setting not received, use Grinnell altimeter setting and increase all DA 64 feet and all MDA 80 feet; increase LNAV Cats C/D and Circling Cat D visibility ¼ SM.</div></div>	MISSED APPROACH: Climb to 2600 direct VUNDY and hold.
-----------	---	--

ASOS 128.325	WATERLOO APP CON ★ 120.9	CLNC DEL 120.9	UNICOM 122.8 (CTAF) 📻
------------------------	------------------------------------	--------------------------	--



4 NM Holding Pattern		BRIDY		ATAXE		IKUDY 1.9 NM to RW13		VUNDY	
6000 ← 306°		2700 → 126°		2600		*1 NM to RW13		*LNAV only	
GP 3.00°		TCH 42		*1620		RW13		5007 X 100	
6 NM		3.1 NM		0.9		1 NM		2759 X 50	
CATEGORY	A		B		C		D		MIRL Rwy 13-31 and 18-36 📻 REIL Rwy 13 and 31 📻
LPV DA			1225-1		250 (300-1)				
LNAV/VNAV DA			1225-1		250 (300-1)				
LNAV MDA			1320-1		345 (400-1)				
Ⓢ CIRCLING	1400-1 425 (500-1)		1440-1 465 (500-1)		1460-1½ 485 (500-1½)		1840-2¾ 865 (900-2¾)		