

WAAS CH 86413 W07A	APP CRS 070°	Rwy Ldg TDZE 1307 Apt Elev 1307
--	------------------------	---

RNAV (GPS) RWY 7
WEXFORD COUNTY (CAD)

RNP APCH - GPS.

▼

▲

Inop table does not apply to LPV all Cats and LNAV Cats A and B. For uncompensated Baro-VNAV systems, LNAV/VNAV NA below -24°C or above 54°C. Circling NA to Rwys 18 and 36. Rwy 7 helicopter visibility reduction below ¾ SM NA. For inop ALS, increase LNAV/VNAV visibility all Cats to 1 ½ SM.

MALSF

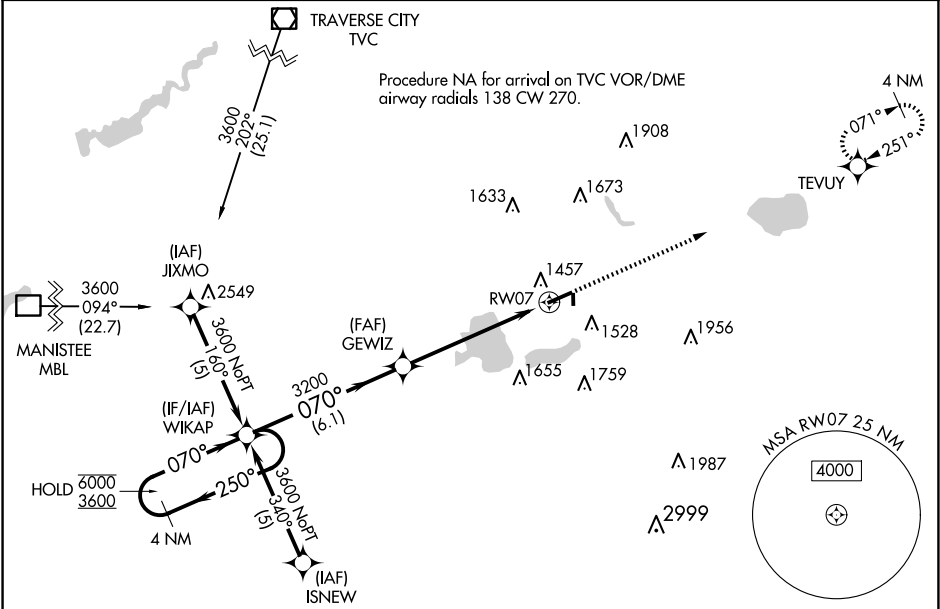
☼

☼

☼

MISSED APPROACH:
Climb to 3000 direct
TEVUY and hold.

AWOS-3P 128.325	MINNEAPOLIS CENTER 132.9 338.3	UNICOM 122.8 (CTAF) 0
---------------------------	--	---------------------------------



ELEV 1307		TDZE 1307	
4 NM Holding Pattern		VGSi and RNAV glidepath not coincident (VGSi Angle 3.00/TCH 41).	
GP 3.05° TCH 45°		3000 TEVUY	
6.1 NM		4.4 NM	
1.4 NM to RW07		RW07	
CATEGORY		A	
LPV DA		1557-¾	
LNAV/VNAV DA		1761-1	
LNAV MDA		1780-¾	
CIRCLING		1820-1	
513 (600-1)		533 (600-1)	
1840-1		1860-1½	
533 (600-1)		553 (600-1½)	
2060-2½		753 (800-2½)	

EC-1, 10 JUL 2025 to 07 AUG 2025

EC-1, 10 JUL 2025 to 07 AUG 2025