

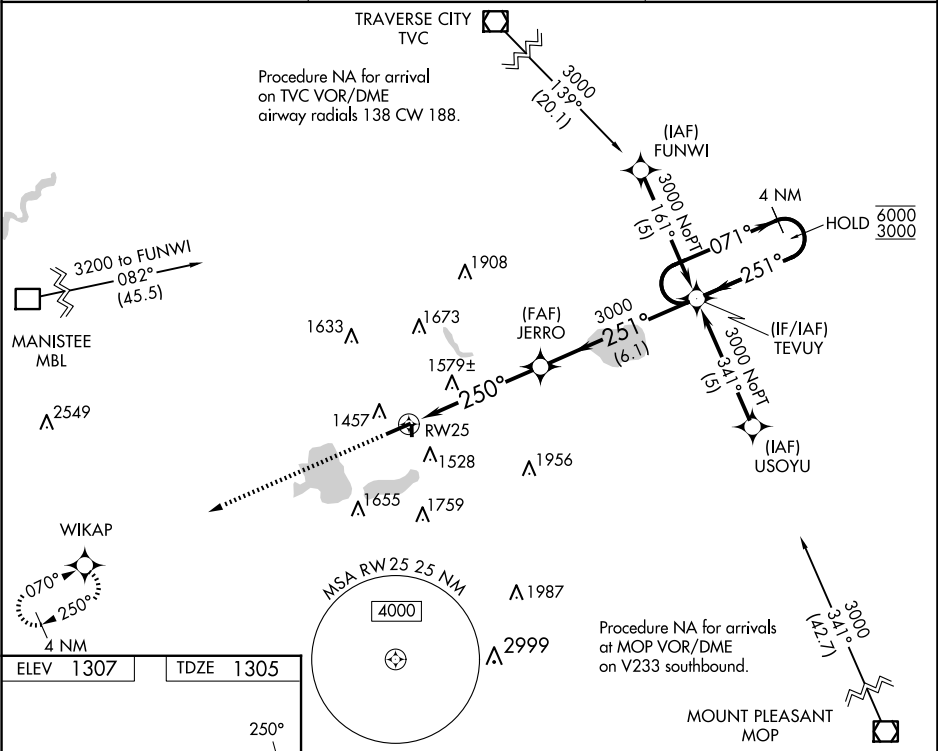
WAAS CH 97513 W25A	APP CRS 250°	Rwy Idg TDZE 1305 Apt Elev 1307
--	------------------------	---

RNAV (GPS) RWY 25

WEXFORD COUNTY (CAD)

RNP APCH - GPS.	MISSED APPROACH: Climb to 3600 direct WIKAP and hold.
▼ Circling NA to Rwy 18 and 36. Rwy 25 helicopter visibility reduction below ¾ SM NA. ▲ For uncompensated Baro-VNAV systems, LNAV/VNAV NA below -24°C or above 54°C.	

AWOS-3P 128.325	MINNEAPOLIS CENTER 132.9 338.3	UNICOM 122.8 (CTAF) 0
---------------------------	--	---------------------------------



3600

↑

WIKAP

✦

VGSI and RNAV glidepath not coincident
 (VGSI Angle 3.00/TCH 56).

4 NM

Holding Pattern

TEVUY

3000

071°

6000

251°

3000

GP 3.04°

TCH 44

1.5 NM to RW25

250°

3000

1.5

3.6 NM

6.1 NM

CATEGORY	A	B	C	D
LPV DA	1625-7 ⁷ / ₈		320 (400-7 ⁷ / ₈)	
LNAV/VNAV DA	1869-1 ⁵ / ₈		564 (600-1 ⁵ / ₈)	
LNAV MDA	1840-1	535 (600-1)	1840-1½	535 (600-1½)
CIRCLING	1840-1	533 (600-1)	2040-2 733 (800-2)	2060-2½ 753 (800-2½)

HIRL Rwy 7-25

REIL Rws 7 and 25