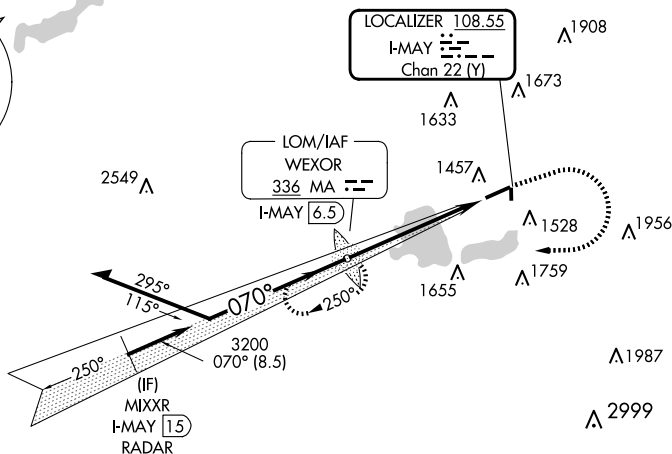
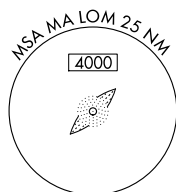





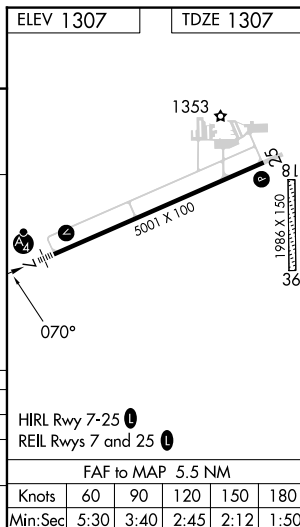
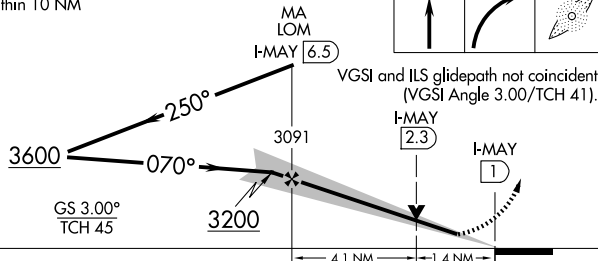
ILS or LOC RWY 7

MISSED APPROACH: Climb to 2400 then climbing right turn to 3200 direct WEXOR LOM/I-MAY 6.5 DME and hold.

UNICOM
122.8 (CTAF) 

| | | |
|---|---|---|
| 2400  | 3200  | MA  |
|---|---|---|

nd ILS glidepath not coincident
(VGS1 Angle 3.00/TCH 41)



WEXFORD COUNTY (CAD)
ILS or LOC RWY 7

44°17'N-85°25'W