


VOR/DME AEL 109.8 Chan 35	APP CRS 342°	Rwy Idg 5000 TDZE 1261 Apt Elev 1261
-----------------------------------------------	------------------------	-----------------------------------------------------------------

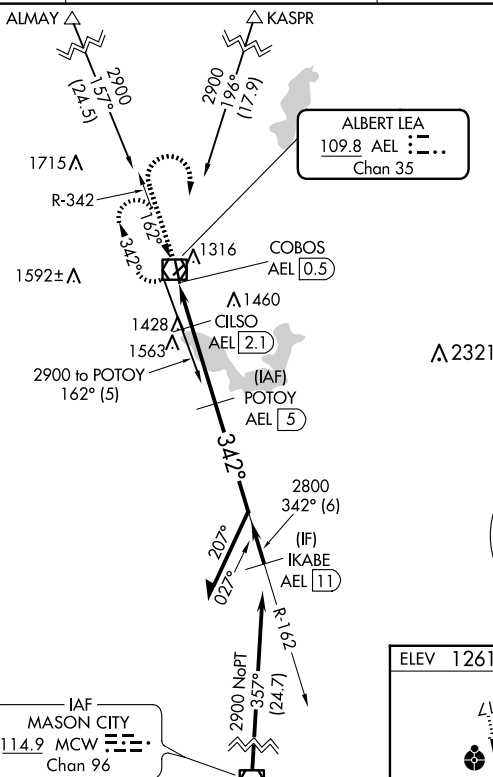
VOR RWY 35
ALBERT LEA MUNI (AEL)

DME required.

- T** Circling Rwy 5, 23 NA at night.
A Rwy 35 helicopter visibility reduction below $\frac{3}{4}$ SM NA.

MISSED APPROACH: Climb to 2500 then climbing right turn to 2900 direct AEL VOR/DME and hold.




AWOS-3PT 119.575	ROCHESTER APP CON ★ 119.8 251.125	UNICOM 123.0 (CTAF) 
----------------------------	---------------------------------------------	-----------------------------------------------------------------------------------------------------------------



Δ2321

MSA AEL 25 NM

3400

2500	2900	AEL
		

POTOY
AEL 5 Remain
 within 10 NM

Figure 1 shows a technical drawing of a mechanical part. The part has a vertical section on the left and a horizontal section on the right. The vertical section has a radius of 3.31 inches and a thickness of 50 inches. The horizontal section has a thickness of 18 inches. The part is labeled COBOS AEL 0.5 and CILSO AEL 2.1.

2800 VGSI and descent angles
not coincident
(VGSI Angle 3.00/TCH 30).

CATEGORY	A	B	C	D
S-35	1740-1	479 (500-1)	1740-1 $\frac{3}{8}$	479 (500-1 $\frac{3}{8}$)
CIRCLING	1780-1	519 (600-1)	1920-1 $\frac{3}{4}$ 659 (700-1 $\frac{3}{4}$)	2040-2 $\frac{1}{2}$ 779 (800-2 $\frac{1}{2}$)

