

VOR/DME AEL 109.8 Chan 35	APP CRS 173°	Rwy Idg 5000 TDZE 1260 Apt Elev 1261
---	------------------------	---

VOR RWY 17
ALBERT LEA MUNI (AEL)

DME required.

T Circling Rwy 5, 23 NA at night. Rwy 17 helicopter visibility reduction below $\frac{3}{4}$ SM NA. When local altimeter setting not received, use Austin altimeter setting: increase all MDA 60 feet; increase S-17 Cat C/D visibility $\frac{1}{2}$ SM and Circling Cat A/C/D visibility $\frac{1}{4}$ SM.

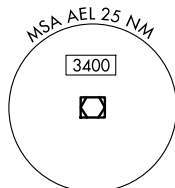
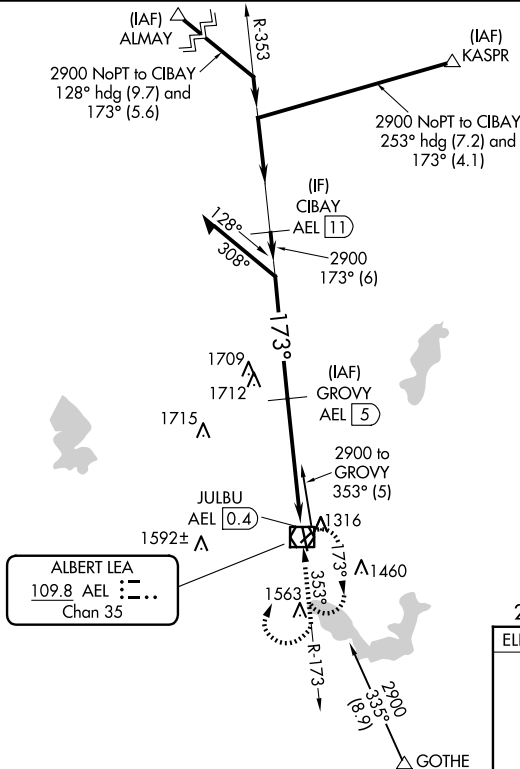
ODALS



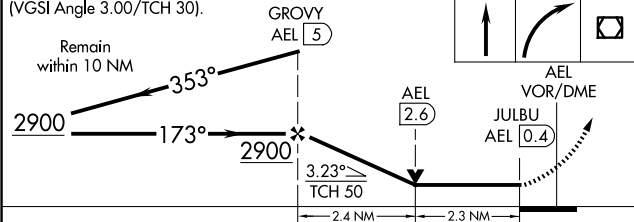
MISSED APPROACH: Climb to 2500 then climbing right turn to 2900 direct AEL VOR/DME and hold.

AWOS-3PT
119.575

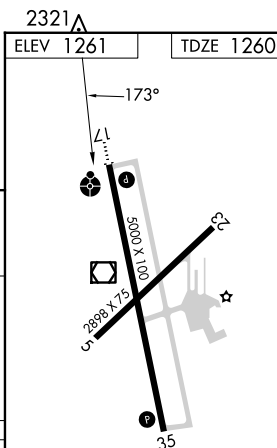
ROCHESTER APP CON ★
119.8 251.125

UNICOM
123.0 (CTAF) **L**

VGSI and descent angles not coincident
(VGSI Angle 3.00/TCH 30).



CATEGORY	A	B	C	D
S-17	2020-1 760 (800-1)		2020-2 760 (800-2)	
CIRCLING	2020-1 759 (800-1)	2020-1¼ 759 (800-1¼)	2020-2¼ 759 (800-2¼)	2040-2½ 779 (800-2½)



MIRL Rwy 17-35 **L**
REIL Rwy 17 and 35 **L**