

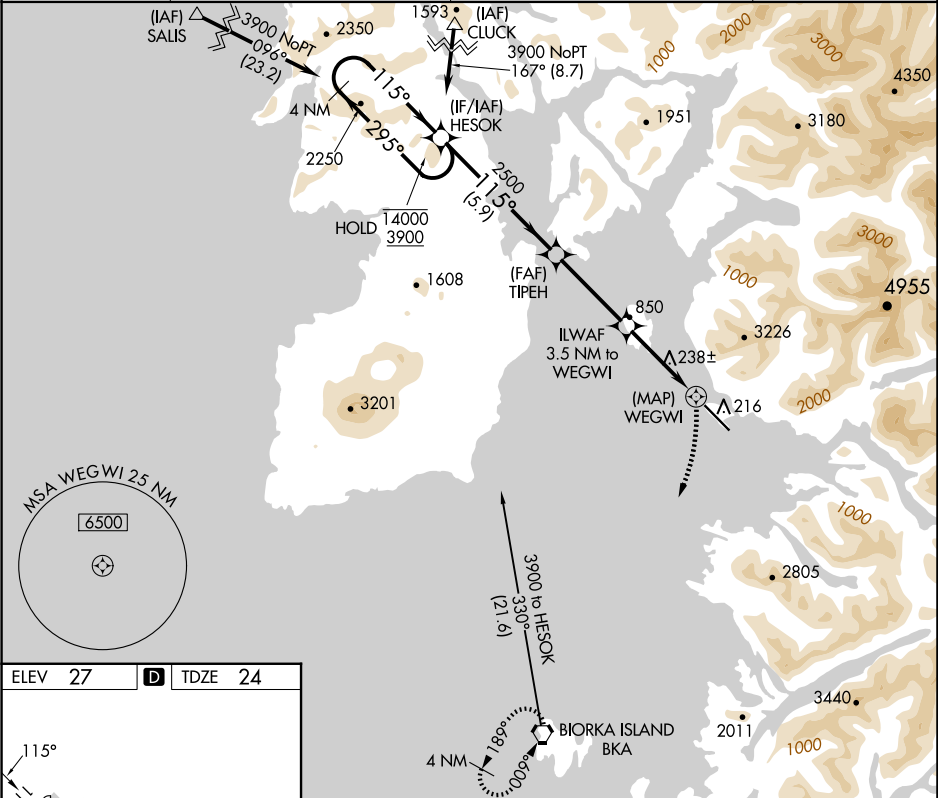
WAAS CH 56632 W11A	APP CRS 115°	Rwy Idg TDZE Apt Elev	6500 24 27
--	------------------------	-----------------------------	---------------------------------------

RNAV (GPS) RWY 11

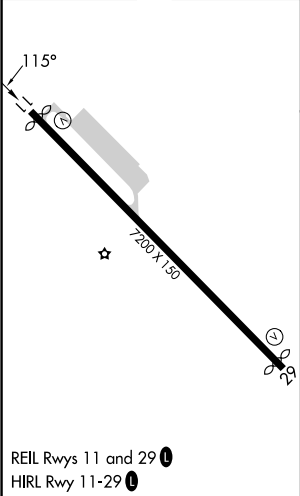
SITKA ROCKY GUTIERREZ (SIT)(PASI)

RNP APCH.	MISSED APPROACH: Climbing right turn to 5000 direct BKA VORTAC and hold, continue climb-in-hold to 5000.
When local altimeter setting not received, procedure NA. Circling NA northeast of Rwy 11-29.	

AFIS 135.9	ANCHORAGE CENTER 126.1 335.5	SITKA RADIO 123.6 (CTAF) 122.2	UNICOM 122.95
----------------------	--	---	-------------------------



ELEV 27	D	TDZE 24
---------	----------	---------



4 NM Holding Pattern		HESOK	TIPEH	ILWAF 3.5 NM to WEGWI	0.8 NM to WEGWI	5000	BKA
14000		295°	115°	2500	1360		
3900		115°	115°	2500	1360		
		5.9 NM	3.6 NM	2.7 NM	0.8	0.5	
CATEGORY	A	B	C	D			
LP	MDA	500-1	476 (500-1)	500-1 $\frac{3}{8}$	476 (500-1 $\frac{3}{8}$)		
LNAV	MDA	1300-1 $\frac{1}{4}$ 1276 (1300-1 $\frac{1}{4}$)	1300-1 $\frac{1}{2}$ 1276 (1300-1 $\frac{1}{2}$)	1300-3	1276 (1300-3)		
C CIRCLING		1300-1 $\frac{1}{4}$ 1273 (1300-1 $\frac{1}{4}$)	1300-1 $\frac{1}{2}$ 1273 (1300-1 $\frac{1}{2}$)	1300-3	1660-3	1633 (1700-3)	