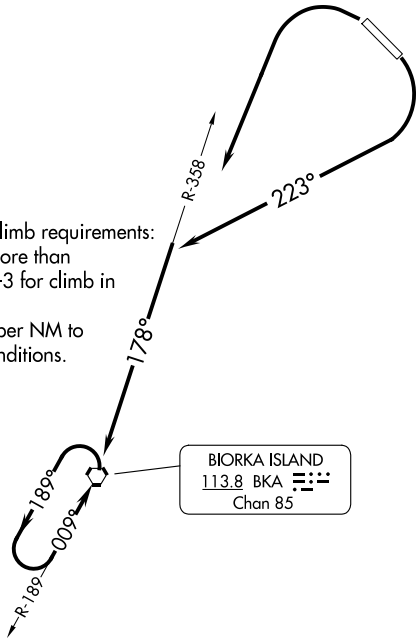


AFIS
135.9
ANCHORAGE CENTER
126.1 335.5
SITKA RADIO
123.6 (CTAF) 122.2

TAKEOFF MINIMUMS

- Rwy 11: Standard with the following minimum climb requirements:
180K or less, 410' per NM to 1900; more than 180K, 645' per NM to 3400, or 3900-3 for climb in visual conditions.
- Rwy 29: Standard with minimum climb of 233' per NM to 1000, or 3900-3 for climb in visual conditions.

WARNING: High terrain all quadrants,
Mount Edgecumbe 3201',
13 NM southwest of Sitka Airport.



TAKEOFF OBSTACLE NOTES

- Rwy 11: Trees beginning 1418' from DER, 776' right of centerline, up to 78' AGL/102' MSL.
Trees beginning 1524' from DER, 576' right of centerline, up to 64' AGL/100' MSL.
Trees beginning 2001' from DER, 492' right of centerline, up to 89' AGL/115' MSL.
Trees beginning 2055' from DER, 753' left of centerline, up to 83' AGL/108' MSL.
Trees beginning 2120' from DER, 548' right of centerline, up to 113' AGL/138' MSL.
Trees beginning 2210' from DER, 533' right of centerline, up to 110' AGL/135' MSL.
Trees beginning 3496' from DER, 792' left of centerline, up to 122' AGL/139' MSL.
Trees beginning 4035' from DER, 774' left of centerline, up to 160' AGL/185' MSL.
Trees beginning 4203' from DER, 847' left of centerline, up to 123' AGL/153' MSL.
Trees beginning 4445' from DER, 838' left of centerline, up to 104' AGL/174' MSL.
Trees beginning 4541' from DER, 529' left of centerline, up to 99' AGL/159' MSL.
Trees beginning 5139' from DER, 20' right of centerline, up to 161' MSL.
Tree 6074' from DER, 34' left of centerline, 145' AGL/184' MSL.
- Rwy 29: Tree 124' from DER, 505' right of centerline, 20' AGL/35' MSL.

NOTE: Chart not to scale.

DEPARTURE ROUTE DESCRIPTION

- TAKEOFF RUNWAY 11: Climbing right turn heading 223° to intercept BKA R-358 to BKA VORTAC, thence. . . .
- TAKEOFF RUNWAY 29: Climbing left turn direct BKA VORTAC, thence. . . .
- VCOA ALL RUNWAYS: Obtain ATC approval for VCOA when requesting IFR clearance. Climb in visual conditions to cross Sitka Rocky Gutierrez Airport at or above 3800 then climb direct BKA VORTAC, thence. . . .
- . . . continue climb in BKA VORTAC holding pattern to cross BKA VORTAC at or above MEA for direction of flight before proceeding on course.