

PITTSFIELD, MAINE

AL-5413 (FAA)

23054

| | | |
|--|------------------------|---|
| WAAS CH 53342 W18A | APP CRS 184° | Rwy Idg 4003 TDZE 197 Apt Elev 197 |
|--|------------------------|---|

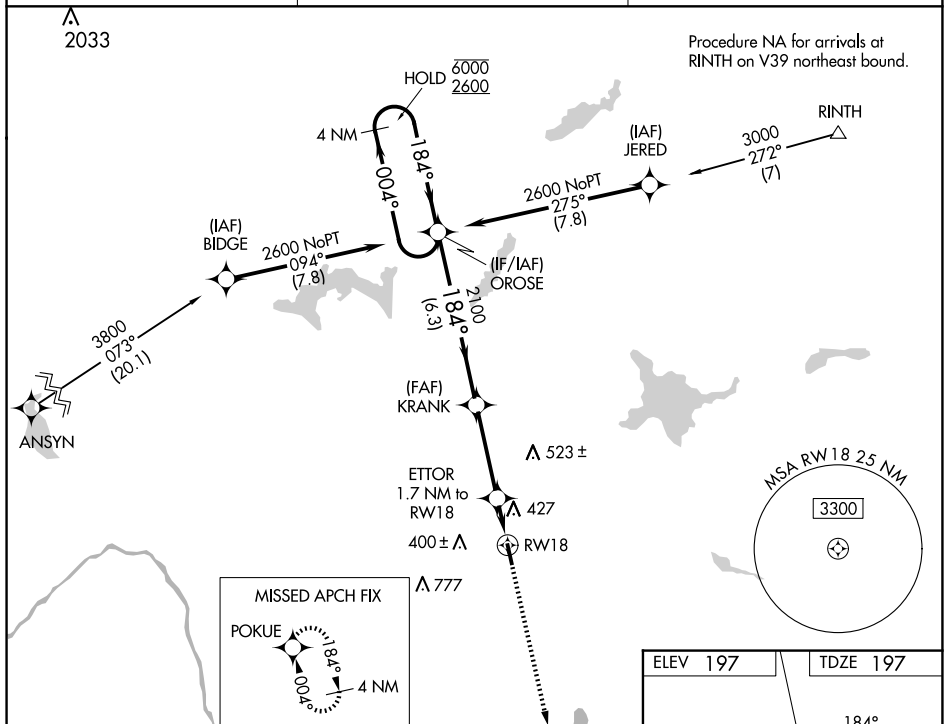
RNAV (GPS) RWY 18
PITTSFIELD MUNI (2B7)

RNP APCH.

T Rwy 18 helicopter visibility reduction below $\frac{3}{4}$ SM NA. Baro-VNAV NA.
A NA Use Bangor altimeter setting; when not received procedure NA.

MISSED APPROACH: Climb to 2600 direct POKUE and hold.

| | | |
|---------------------------|--|---------------------------------|
| BGR ASOS 127.75 | BANGOR APP CON 118.925 239.3 | UNICOM 122.8 (CTAF) 0 |
|---------------------------|--|---------------------------------|



4 NM Holding Pattern

6000 ← 004°

2600 ← 184° →

GP 3.42°

TCH 40

OROSE

KRANK

2100

2100

ETT

1.7 NM to RW18

*LNAV only.

POKUE


RW18

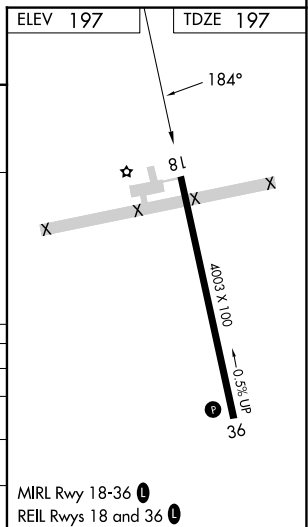
*860

6.3 NM

3.4 NM

1.7 NM

| CATEGORY | | A | B | C | D |
|--|-----|---------------------|----------------------------|---|----|
| LPV | DA | 610-1 $\frac{1}{8}$ | 413 (500-1 $\frac{1}{8}$) | | NA |
| LNNAV/ VNAV | DA | 785-1 $\frac{3}{4}$ | 588 (600-1 $\frac{3}{4}$) | | NA |
| LNNAV | MDA | 740-1 | 543 (600-1) | 740-1 $\frac{5}{8}$ 543 (600-1 $\frac{5}{8}$) | NA |
|  CIRCLING | | 800-1 | 603 (700-1) | 880-2 683 (700-2) | NA |



PITTSFIELD, MAINE
Amdt 1A 05NOV20

44°46'N-69°22'W

PITTSFIELD MUNI (2B7)

RNAV (GPS) RWY 18