

WAAS CH 49000 W21A	APP CRS 205°	Rwy Idg 5002 TDZE 1216 Apt Elev 1216
--	------------------------	---

RNAV (GPS) RWY 21

SAWYER COUNTY (HYR)

RNP APCH.

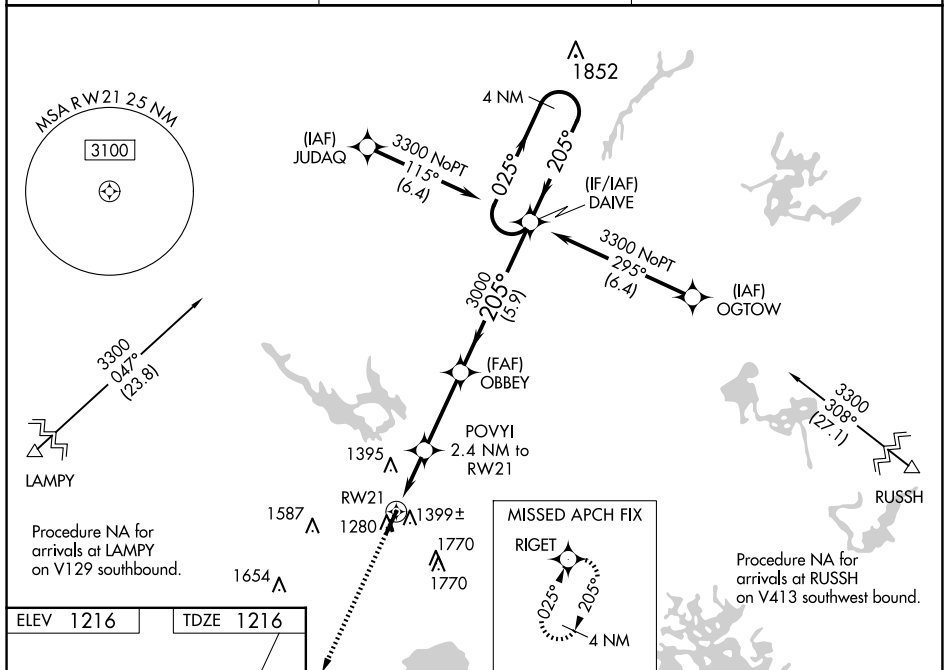
T For uncompensated Baro-VNAV systems, LNAV/VNAV NA below -22°C (-7°F) or above 54°C (130°F). For inop MALSR, increase LNAV/VNAV all Cats visibility to 1½ mile and LNAV Cat A and B visibility to 1 mile. Rwy 21 helicopter visibility reduction below ¾ SM NA.

A Circling NA to Rwy's 16 and 34.



MISSED APPROACH:
Climb to 3100 direct
RIGET and hold.

ASOS 118.4	MINNEAPOLIS CENTER 126.45 276.4	UNICOM 122.8 (CTAF) 0
----------------------	---	---------------------------------



REIL Rwy 301
MIRL Rwy 3-21

CATEGORY	A	B	C	D
LPV DA		1518- $\frac{3}{4}$	302 (400- $\frac{3}{4}$)	
LNAV/VNAV DA		1560- $\frac{3}{4}$	344 (400- $\frac{3}{4}$)	
LNAV MDA		1640- $\frac{3}{4}$	424 (500- $\frac{3}{4}$)	
C CIRCLING	1860-1 644 (700-1)	2060-1 $\frac{1}{4}$ 844 (900-1 $\frac{1}{4}$)	2120-2 $\frac{3}{4}$ 904 (1000-2 $\frac{3}{4}$)	2120-3 904 (1000-3)