

LOC/DME	I-PTY	APP CRS	Rwy ldg	5002
108.5		205°	TDZE	1216
Chan 22			Apt Elev	1216

ILS or LOC RWY 21

SAWYER COUNTY (HYR)

From RZN DME: RNAV 1-GPS required.
DME required.

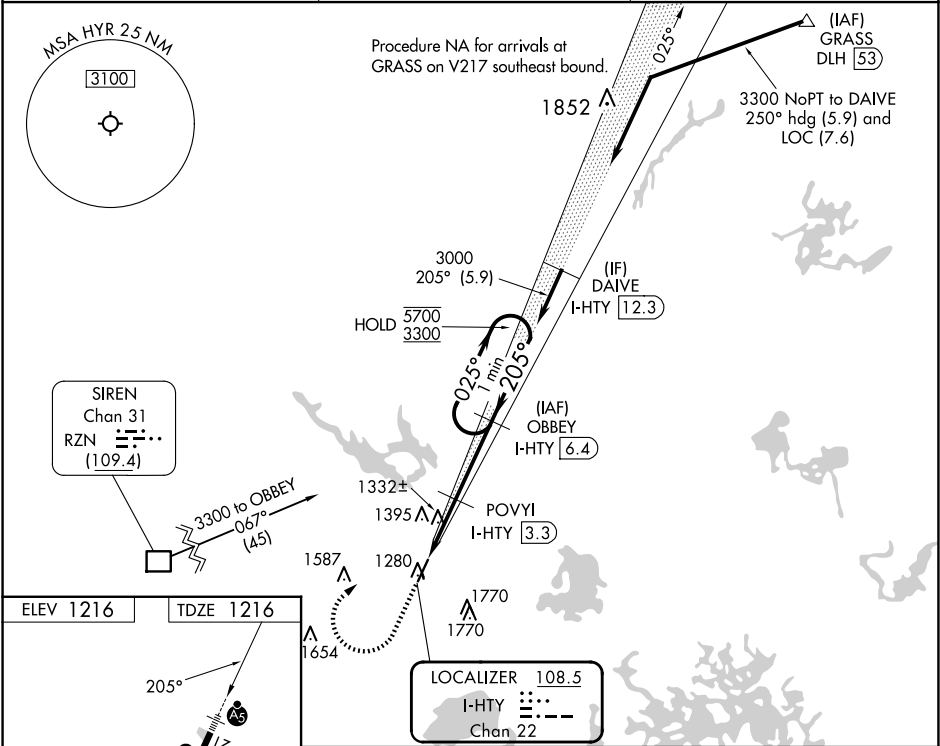
MALSR

MISSED APPROACH: Climb to 2200 then climbing right turn to 3300 on heading 060° and I-PTY northeast course to OBBEY/ I-PTY 6.4 DME and hold.

NA

Circling NA to Rws 16 and 34. Rwy 21 helicopter visibility reduction below ¾ SM NA. For inop ALS, increase S-ILS 21 all Cts visibility to ¾ SM, increase LOC Cat A/B visibility to 1 SM, Cat C/D to 1½ SM.

ASOS 118.4	MINNEAPOLIS CENTER 126.45 276.4	UNICOM 122.8 (CTAF) 0
---------------	------------------------------------	--------------------------



2200	3300	I-PTY NE crs	OBBEY I-PTY 6.4	OBBEY I-PTY 6.4	One Minute Holding Pattern
↑	hdg 060°				
*LOC only.	*I-PTY I-PTY 0.9	POVYI I-PTY 3.3			
	1.1 NM	1.3 NM	3.1 NM		
CATEGORY	A	B	C	D	
S-ILS 21		1518-¾	302 (400-¾)		
S-LOC 21		1600-¾	384 (400-¾)		
CIRCLING	1860-1 644 (700-1)	2060-1¼ 844 (900-1¼)	2120-2¾ 904 (1000-2¾)	2120-3 904 (1000-3)	

EC-3, 10 JUL 2025 to 07 AUG 2025

EC-3, 10 JUL 2025 to 07 AUG 2025