

APP CRS	Rwy Idg	3199
276°	TDZE	719
	Apt Elev	724

Rwy Idg	3199
TDZE	719
Apt Elev	724

RNAV (GPS) RWY 28

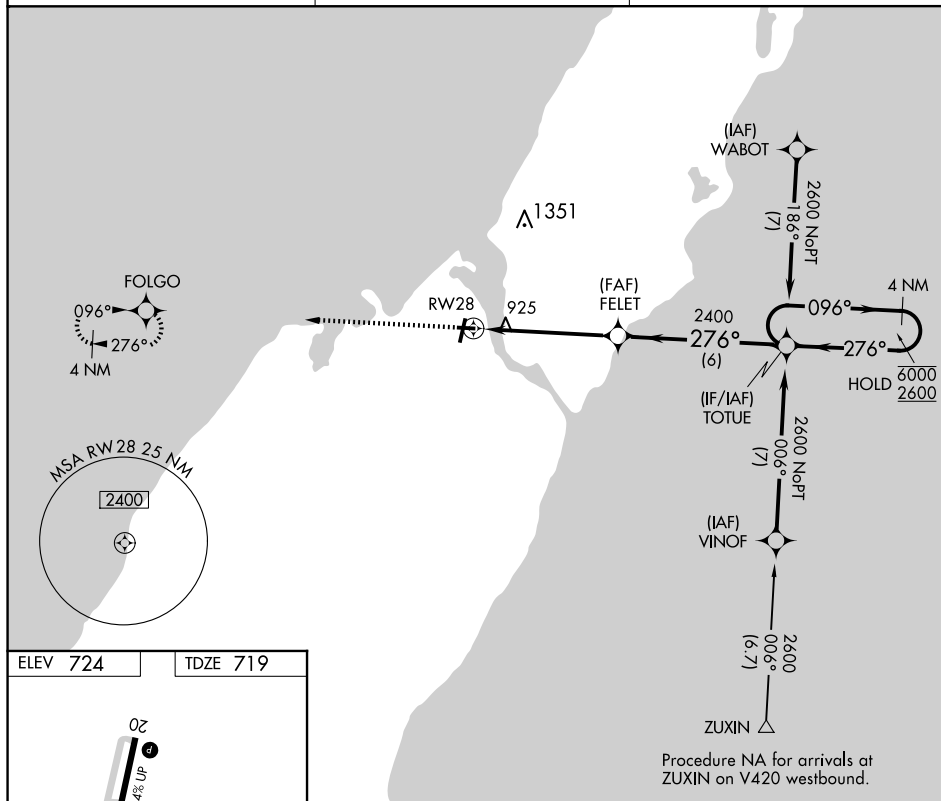
DOOR COUNTY CHERRYLAND (SUE)

RNP APCH - GPS.

MISSED APPROACH: Climb to 2600 direct FOLGO and hold.

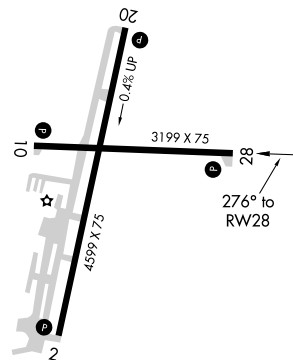
AWOS-3PT
128.325

GREEN BAY APP CON ★
119.25 338.2

UNICOM
122.7 (CTAF) **L**

ELEV 724

TDZE 719

RLLS Rwy 2 **L**

REIL Rwy 2, 10, 20 and 28 L

MIRL Rwy 2-20 and 10-28 **L**

Visual Segment - Obstacles.

4 NM Holding Pattern

2600 MSL

2400 MSL

2600 MSL

6000 MSL

096°

276°

1.5 NM to RW28

3.7 NM

6 NM

FEET

TOTUE

RW28

1.5 3.7 6 NM

CATEGORY	A	B	C	D
LNAV MDA	1240-1	521 (600-1)	1240-1½ 521 (600-1½)	NA
CIRCLING	1280-1	556 (600-1)	1280-1½ 556 (600-1½)	NA

STURGEON BAY, WISCONSIN

Amdt 1 14JUL22

44°51'N-87°25'W

DOOR COUNTY CHERRYLAND (SUE)
RNAV (GPS) RWY 28