

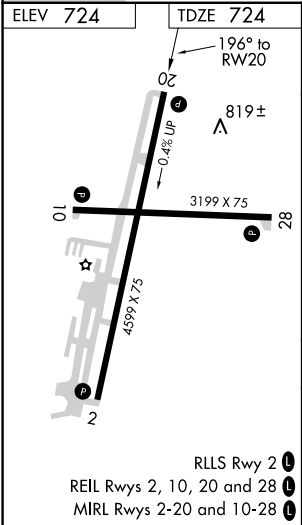
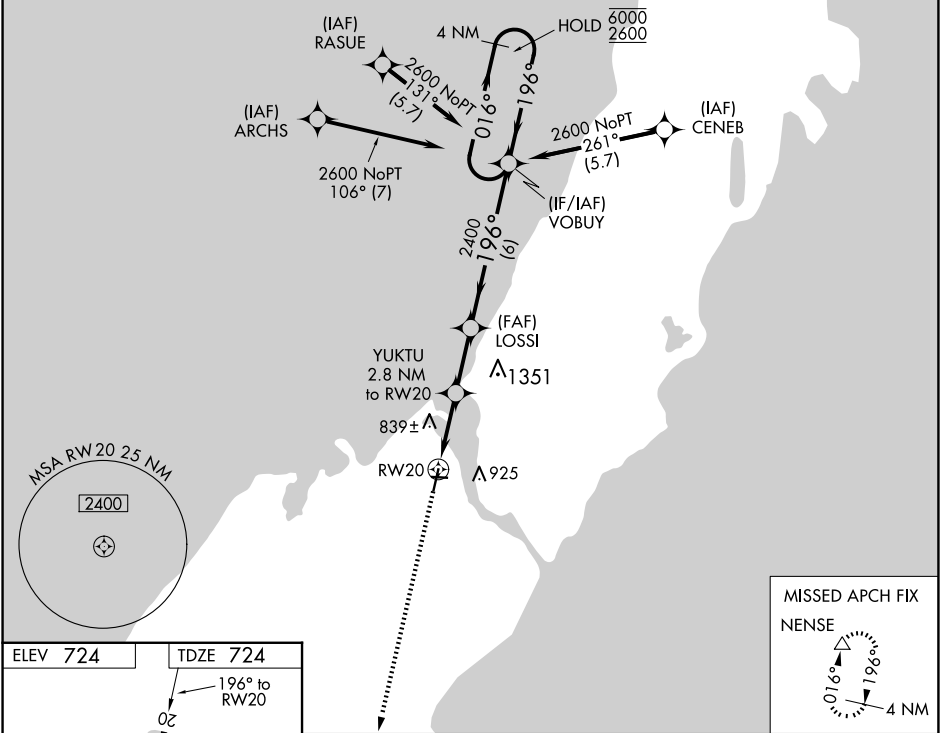
WAAS CH 86304 W20A	APP CRS 196°	Rwy Idg TDZE 724 Apt Elev 724	4599
--	------------------------	---	-------------

RNAV (GPS) RWY 20

DOOR COUNTY CHERRYLAND (SUE')

RNP APCH - GPS.		MISSED APPROACH: Climb to 3500 direct NENSE and hold.
<div><div>T</div><div>A</div></div>	For uncompensated Baro-VNAV systems, LNAV/VNAV NA below -16°C or above 54°C.	

AWOS-3PT 128.325	GREEN BAY APP CON ★ 119.25 338.2	UNICOM 122.7 (CTAF) 0
----------------------------	--	--



3500 ↑		NENSE △		4 NM Holding Pattern	