

WAAS

CH 81904

W02A

APP CRS

016°

Rwy Idg

4599

TDZE

724

Apt Elev

724

RNAV (GPS) RWY 2

DOOR COUNTY CHERRYLAND (SUE')

RNP APCH.

▼

▲

Rwy 2 helicopter visibility reduction below ¾ SM NA. For uncompensated Baro-VNAV systems, LNAV/VNAV NA below -16°C or above 54°C.

MISSED APPROACH:

Climb to 2600 direct VOBUY and hold.

AWOS-3PT

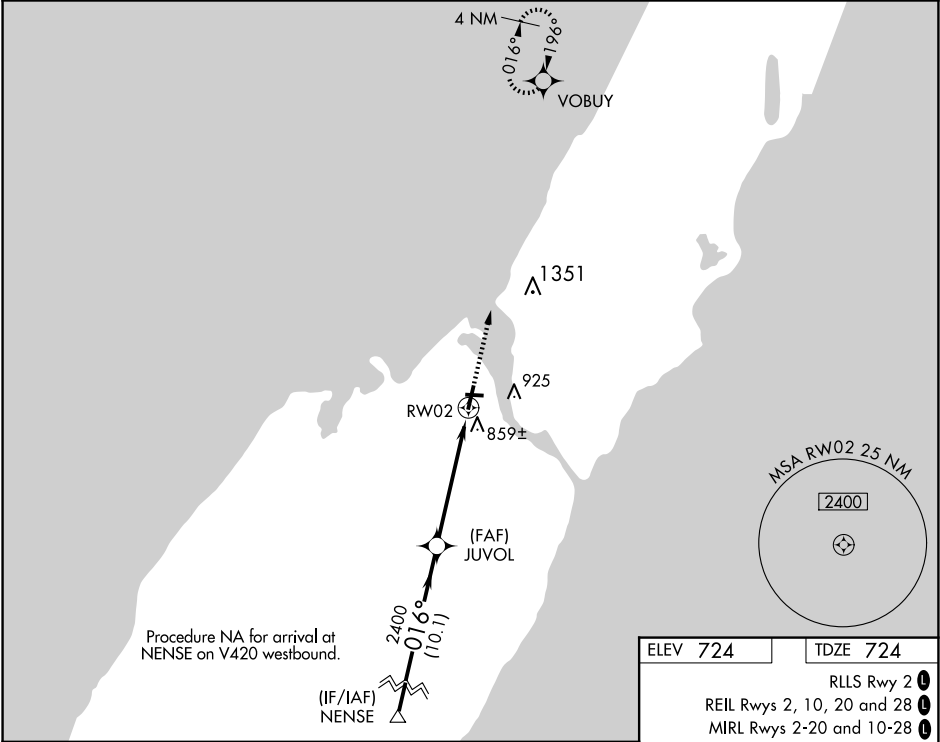
128.325

GREEN BAY APP CON ★

119.25 338.2

UNICOM

122.7(CTAF)0



NENSE

3500

016°

GP 3.00° TCH 40

JUVOL

2400

2400

10.1 NM

4 NM

1.1 NM

RWY 2

2400

2600

VOBUY

\*LNAV only.

CATEGORY	A	B	C	D
LPV DA	1013-1	289 (300-1)		
LNAV/DA	1164-1½	440 (500-1½)		
LNAV MDA	1120-1	396 (400-1)	1120-1⅛	396 (400-1⅛)
CIRCLING	1280-1	556 (600-1)	1280-1½	1340-2
			556 (600-1½)	616 (700-2)

REIL Rwy 2

MIRL Rwy 2-20 and 10-28

01

20

28

3199 X 75

4599 X 75

016° to RWY 2