

WAAS CH 82026 W04A	APP CRS 044°	Rwy Idg 5000 TDZE 1664 Apt Elev 1664
--	------------------------	---

RNAV (GPS) RWY 4


ROCKWOOD MUNI (RKW)

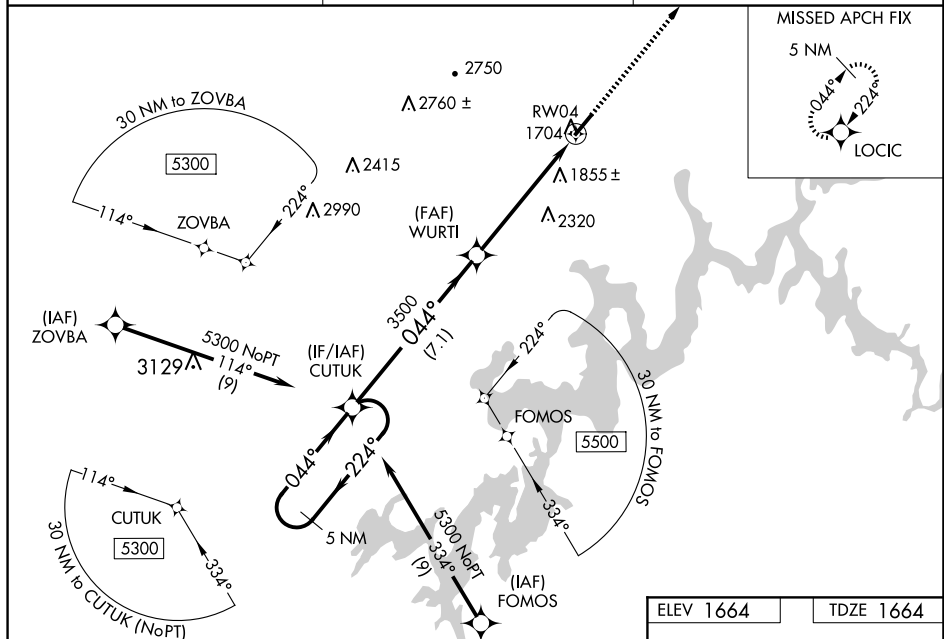
NA Baro-VNAV NA when using Crossville altimeter setting. For uncompensated Baro-VNAV systems, LNAV/VNAV NA below -18°C (0°F) or above 33°C (91°F). DME/DME RNP-0.3 NA. When local altimeter setting not received, use Crossville altimeter setting: increase DA to 1989 feet and LPV and LNAV/VNAV visibility all Cats ¼ SM, increase all MDA 80 feet and LNAV Cat C and D visibility ⅓ SM and Circling Cat C visibility ½ SM.

MISSED APPROACH: Climb to 5600 direct LOCIC and hold, continue climb-in-hold to 5600.

AWOS-3
118.775

ATLANTA CENTER
133.6 254.3

UNICOM
122.8 (CTAF) 



5 NM Holding Pattern	VGSI and RNAV glidepath not coincident CUTUK (VGSI Angle 3.00/TCH 26).
-------------------------	---

5600	LOCIC
------	-------

CATEGORY	7.1 NM		3.6 NM	
	A	B	C	D
LPV DA	1914-¾		250 (300-¾)	
LNAV/VNAV DA	1914-¾		250 (300-¾)	
LNAV MDA	2100-1	436 (500-1)	2100-1¾	436 (500-1¾)
CIRCLING	2100-1 436 (500-1)	2200-1 536 (600-1)	2260-1½ 596 (600-1½)	2780-3 1116 (1200-3)

