

WAAS CH 61126 W22A	APP CRS 224°	Rwy Idg 5000 TDZE 1662 Apt Elev 1664
--	------------------------	---

RNAV (GPS) RWY 22

ROCKWOOD MUNI (RKW)

▼ For uncompensated Baro-VNAV systems, LNAV/VNAV NA below -18°C (0°F) or above 33°C (91°F). DME/DME RNP-0.3 NA. When local altimeter setting not received, use Crossville altimeter setting; increase LPV DA to 1987 feet and visibility all Cats ¼ SM; increase LNAV/VNAV DA to 2011 feet and visibility all Cats ¼ SM; increase all MDA 80 feet and increase LNAV Cat C and D visibility ¼ SM and Circling Cat C visibility ½ SM. Baro-VNAV NA when using Crossville altimeter setting.

MISSED APPROACH:
Climb to 5300 direct
CUTUK and hold,
continue climb-in-
hold to 5300.

AWOS-3 118.775	ATLANTA CENTER 133.6 254.3	UNICOM 122.8 (CTAF) 0
--------------------------	--------------------------------------	---------------------------------

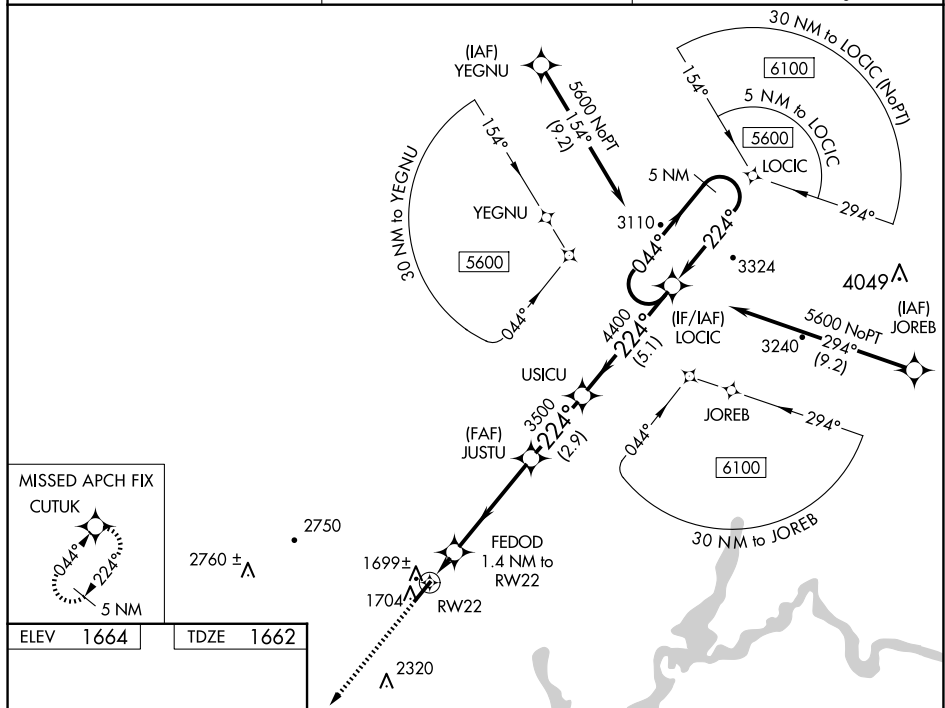


Diagram illustrating the RW22 approach procedure. The approach is a 224° glidepath. Key altitudes and distances are marked:

- 1705 (Start of approach)
- 5000 x 100 (Runway dimensions)
- 0.6% UP (Runway slope)
- 224° (Glidepath angle)
- 2100* (Altitude at 1.4 NM from RW22)
- 3500 (Altitude at 4.4 NM from RW22, JUSTU)
- 4400 (Altitude at 5.1 NM from RW22, USICU)
- 5 NM (Final segment, 044° Holding Pattern)

CATEGORY	A	B	C	D
LPV DA	1912-7/8	250 (300-7/8)		
LPV/VNAV DA	1936-7/8	274 (300-7/8)		
LPV MDA	1980-1	318 (400-1)		
CIRCLING	2100-1 436 (500-1)	2200-1 536 (600-1)	2260-1½ 596 (600-1½)	2780-3 1116 (1200-3)