

WAAS CH 90516 W32A	APP CRS 321°	Rwy Idg TDZE Apt Elev	3851 1122 1122
--	------------------------	-----------------------------	---

RNAV (GPS) RWY 32

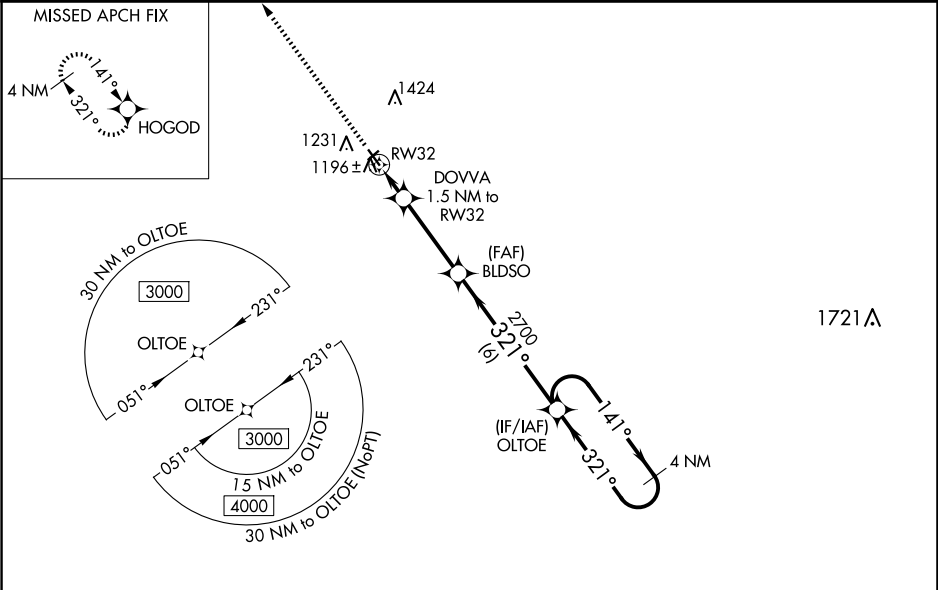
WEBSTER CITY MUNI (EBS)

⚠

For uncompensated Baro-VNAV systems, LNAV/VNAV NA below -17°C (2°F) or above 54°C (130°F). DME/DME RNP-0.3 NA. When local altimeter setting not received, use Clarion altimeter setting and increase all DA 49 feet and all MDA 60 feet. Baro-VNAV and VDP NA when using Clarion altimeter setting. Helicopter visibility reduction below ¾ SM NA.

MISSED APPROACH: Climb to 3000 direct HOGOD and hold.

AWOS-3 127.825	MINNEAPOLIS CENTER 134.0 288.3	UNICOM 122.8 (CTAF) 1
--------------------------	--	---------------------------------



ELEV 1122

TDZE 1122

MRL Rwy 14-32 1
REIL Rws 14 and 32 1

3000

HOGOD

*LNAV only.

RW32

DOVVA 1.5 NM to RW32

BLDSO

OLTOE

4 NM Holding Pattern

GP 3.00° TCH 40

VGSi and RNAV glidepath not coincident (VGSi Angle 3.00/TCH 32).

1620*

2700

321°

141°

3000

1 NM

0.5 NM

3.3 NM

6 NM

CATEGORY	A	B	C	D
LPV DA	1372-1 250 (300-1)		NA	
LNAV/VNAV DA	1372-1 250 (300-1)		NA	
LNAV MDA	1460-1 338 (400-1)		NA	
CIRCLING	1600-1 478 (500-1)		NA	