

MOUNTAIN HOME, ARKANSAS

AL-5406 (FAA)

24305

APP CRS	Rwy Idg	5000
229°	TDZE	919
	Apt Elev	928

Rwy Idg	<b>5000</b>
TDZE	<b>919</b>
Apt Elev	<b>928</b>

TDZE	<b>919</b>
Apt Elev	<b>928</b>

Apt Elev 928

RNAV (GPS) RWY 23  
BAXTER COUNTY (BPK)

BAXTER COUNTY (BPK)

RNP APCH - GPS.

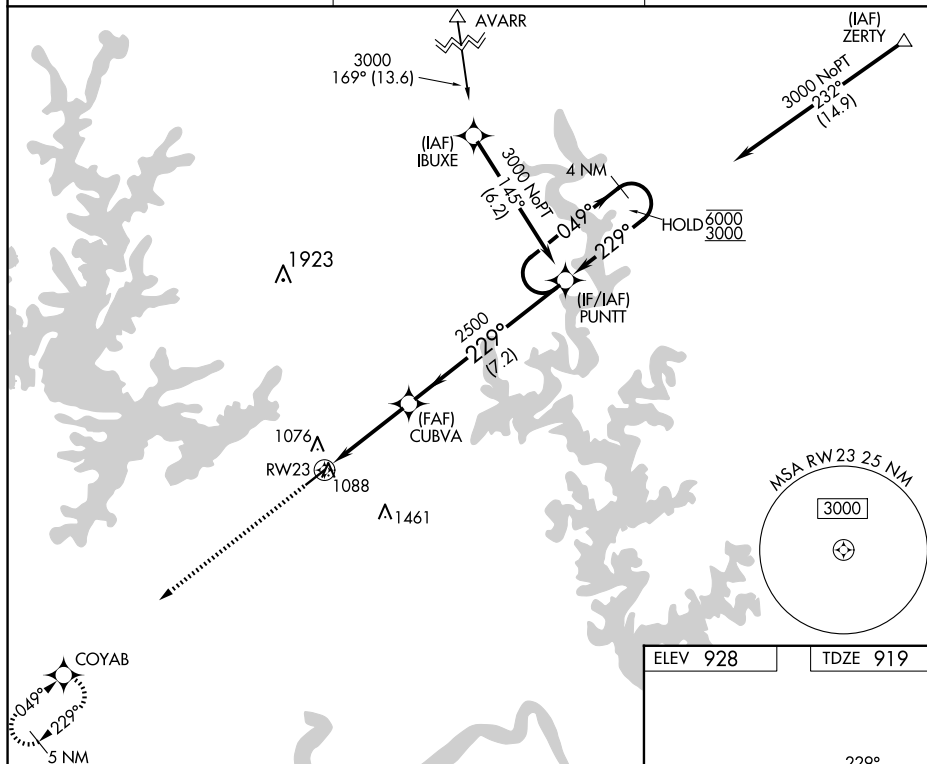
**T** Procedure NA at night. Rwy 23 helicopter visibility reduction below 1 SM NA.  
**A** Circling NA for Cat C southeast of Rwy 5-23.

**A** Circling NA for Cat C southeast of Rwy 5-23.

**MISSED APPROACH:** Climb to 3100 direct COYAB and hold.

ASOS  
133.975

MEMPHIS CENTER  
126.85 281.55

UNICOM  
123.0 (CTAF) **L**

ELEV 928

TDZE 919

ACCEPTED MANUSCRIPT

VGSI and descent angles not coincident  
(VGSI Angle 4.00/TCH 46).

Holding Pattern

3100  
↑

COYAB  
✦

VGSI and descent angles not coincident  
(VGSI Angle 4.00/TCH 46).

PUNTT

4 NM  
Holding Pattern

049° → 6000  
← 229° 3000

CUBVA

229°

2500

3.77°  
TCH 46

RW23

3.9 NM

7.2 NM

CATEGORY	A	B	C	D
LNAV MDA	1360-1	441 (500-1)	1360-1 $\frac{3}{8}$ 441 (500-1 $\frac{3}{8}$ )	NA
<b>C</b> CIRCLING	1400-1	472 (500-1)	1460-1 $\frac{1}{2}$ 532 (600-1 $\frac{1}{2}$ )	NA

REIL Rwy 5 and 23 **L**  
MIRL Rwy 5-23 **L**

MIRL Rwy 5-23 L

MOUNTAIN HOME, ARKANSAS

Amdt 1 31OCT24

36°22'N-92°28'W

BAXTER COUNTY (BPK)

RNAV (GPS) RWY 23

SC-1, 10 JUL 2025 to 07 AUG 2025