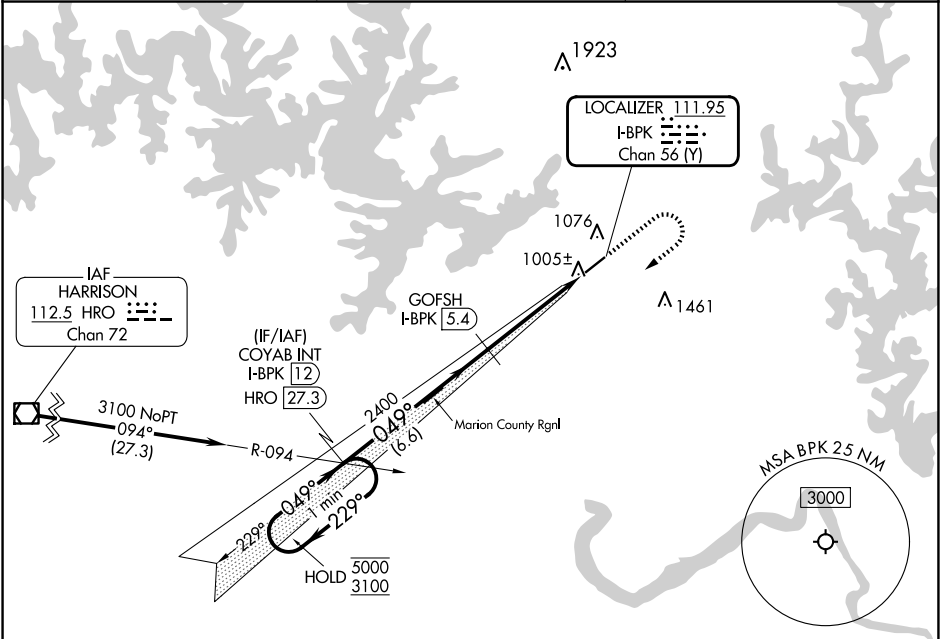


LOC/DME I-BPK 111.95 Chan 56 (Y)	APP CRS 049°	Rwy Idg 5000 TDZE 928 Apt Elev 928	ILS or LOC RWY 5 BAXTER COUNTY (BPK)
--	------------------------	---	---

DME required for LOC only.	MISSED APPROACH: Climb to 2000, then climbing right turn to 3100 on heading 230° and HRO R-094 to COYAB INT/I-BPK 12 DME and hold.
⚠ Circling NA for Cat C, southeast of Rwy 5-23. Procedure NA at night. ⚠ Rwy 5 helicopter visibility reduction below 1 SM NA.	

ASOS 133.975	MEMPHIS CENTER 126.85 281.55	UNICOM 123.0 (CTAF) 0
------------------------	--	--



ELEV 928		TDZE 928		
VGSI and ILS glidepath not coincident (VGSI Angle 3.00/TCH 38).		COYAB INT		
One Minute Holding Pattern		HRO R-094		
COYAB INT I-BPK 12 HRO 27.3		COYAB INT		
5000 ← 229° 3100 → 049°		2000 3100 HRO R-094		
GS 3.00° TCH 44		hdg 230°		
5000 3100		GOFSH I-BPK 5.4		
2400		I-BPK 0.9		
6.6 NM		4.5 NM		
CATEGORY	A	B	C	D
S-ILS 5	1178-1	250 (300-1)		NA
S-LOC 5	1260-1	332 (400-1)		NA
CIRCLING	1400-1	472 (500-1)	1460-1½ 532 (600-1½)	NA

REIL Rwy 5 and 23

MIRL Rwy 5-23