

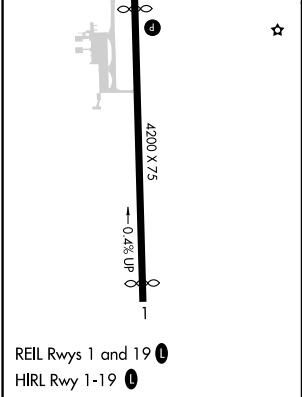
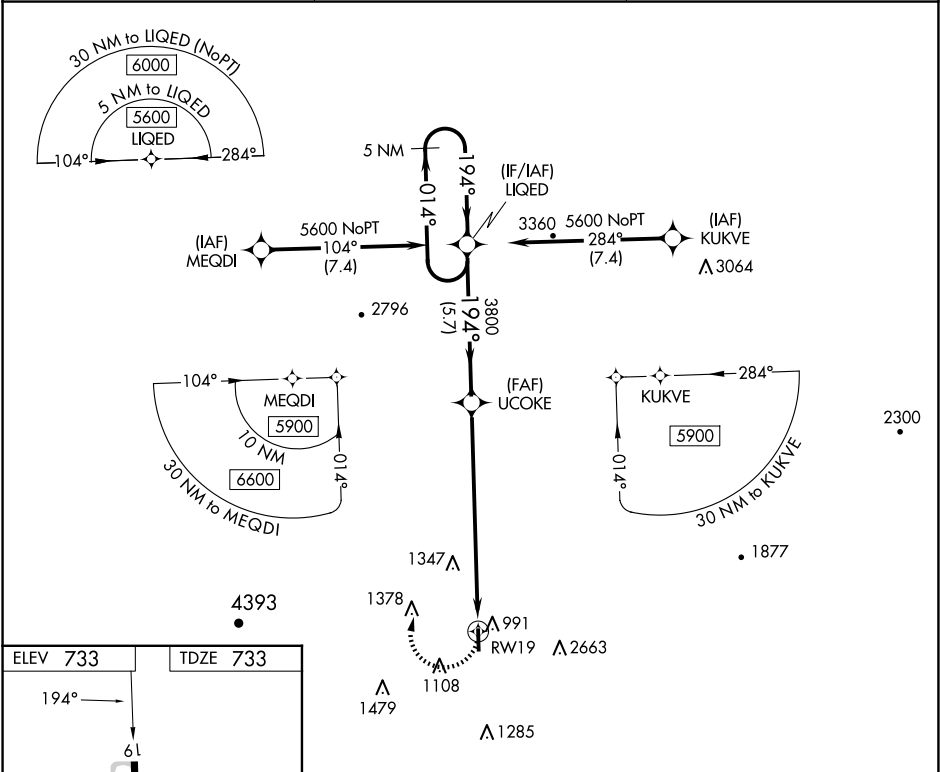
WAAS CH 72731 W19A	APP CRS 194°	Rwy Idg TDZE 733 Apt Elev 733
--	------------------------	---

RNAV (GPS) Y RWY 19

MORRISVILLE-STOWE STATE (MVL)

<div><div><div><div></div><div></div></div><div><div></div><div></div></div></div><div><div>19°C</div></div></div> <div><div><div></div><div></div></div><div><div></div><div></div></div></div>	<div>Circling NA for Cat C E of Rwy 1-19. Rwy 19 helicopter visibility reduction below ¾ SM NA. DME/DME RNP-0.3 NA. VDP NA when using Burlington altimeter setting. When local altimeter setting not received, use Burlington altimeter setting and increase all MDAs 120 feet.</div>	<div>MISSED APPROACH: (Do not exceed 165K until LIQED) Climbing right turn to 5600 direct LIQED and hold, continue climb-in-hold to 5600.</div>
--	---	---

ASOS 135.625	BOSTON CENTER 135.7 282.2	UNICOM 122.8 (CTAF) 0
------------------------	-------------------------------------	---------------------------------



5600

LIQED

UCOKE

RW19

2.9 NM to RW19

3.50°

TCH 31

2.9 NM

5.3 NM

5.7 NM

LIQED

5 NM Holding Pattern

014°

194°

5600

3800

CATEGORY	A	B	C	D
LP MDA	1860-1¼ 1127 (1200-1¼)	1860-1½ 1127 (1200-1½)	1860-3 1127 (1200-3)	NA
LNAV MDA	2160-1¼ 1427 (1500-1¼)	2160-1½ 1427 (1500-1½)	2160-3 1427 (1500-3)	NA
CIRCLING	2160-1¼ 1427 (1500-1¼)	2160-1½ 1427 (1500-1½)	2160-3 1427 (1500-3)	NA