

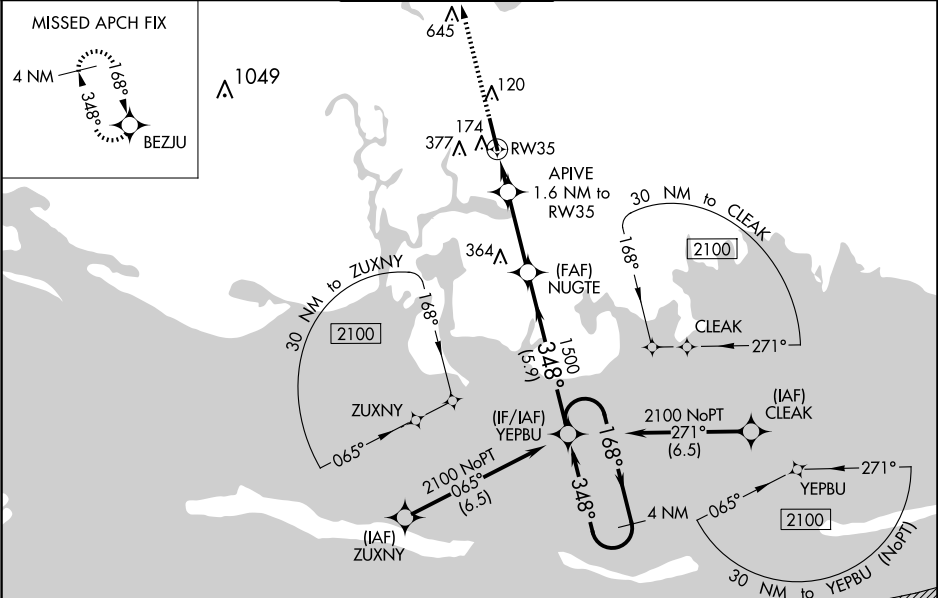
| | | |
|--|------------------------|---|
| WAAS CH 72904 W35A | APP CRS 348° | Rwy Idg 6501 TDZE 17 Apt Elev 17 |
|--|------------------------|---|

RNAV (GPS) RWY 35
TRENT LOTT INTL (PQL)

⚠ Baro-VNAV NA when using Mobile Rgnl altimeter setting. For uncompensated Baro-VNAV systems, LNAV/VNAV NA below -5°C (23°F) or above 54°C (130°F). DME/DME RNP-0.3 NA. When local altimeter setting not received, use Mobile Rgnl altimeter setting and increase LPV DA to 342 feet, LNAV/VNAV DA to 422 feet, and all MDA 80 feet; increase LPV and LNAV/VNAV visibility ¼ mile all Cts. Increase LNAV visibility Cts C/D ½ mile and Circling visibility Cts C/D ½ mile.

MISSED APPROACH: Climb to 1800 direct BEZJU and hold.

| | | | | | |
|------------------------|--|---|---------------------------|----------------------------|------------------------|
| ATIS 135.175 | MOBILE APP CON ★ 121.0 307.1 | TRENT LOTT TOWER ★ 118.575 (CTAF) 0 | GND CON 121.725 | CLNC DEL 121.725 | UNICOM 122.8 |
|------------------------|--|---|---------------------------|----------------------------|------------------------|



| | |
|---------|---------|
| ELEV 17 | TDZE 17 |
|---------|---------|

MIRL Rwy 17-35

1800 BEZJU

*LNAV only.

APIVE 1.6 NM to RW35

RW35

NUGTE 1500

YEPBU 4 NM Holding Pattern

GP 3.00° TCH 40

| CATEGORY | A | B | C | D |
|--------------|---------------------------|-------------------|---------------------------|-------------------|
| LPV DA | 267-7/8 250 (300-7/8) | | | |
| LNAV/VNAV DA | 347-1 1/8 330 (400-1 1/8) | | | |
| LNAV MDA | 440-1 423 (500-1) | | 440-1 1/4 423 (500-1 1/4) | |
| CIRCLING | 480-1 463 (500-1) | 680-1 663 (700-1) | 680-1 3/4 663 (700-1 3/4) | 680-2 663 (700-2) |

SC-4, 10 JUL 2025 to 07 AUG 2025

SC-4, 10 JUL 2025 to 07 AUG 2025