

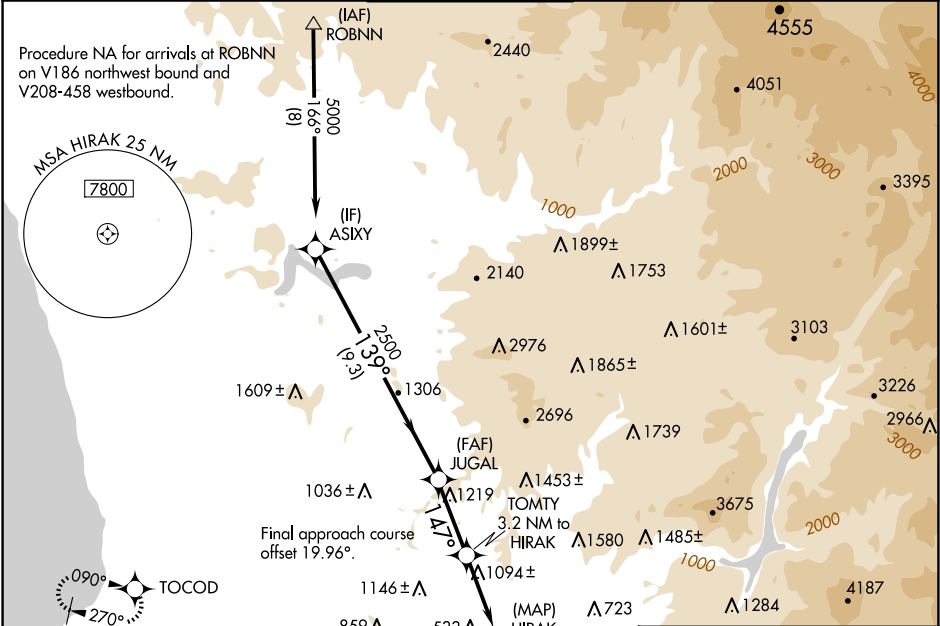
WAAS CH 86928 W17A	APP CRS 147°	Rwy Ldg TDZE Apt Elev	3695 379 388
--	------------------------	-----------------------------	---

RNAV (GPS) RWY 17

GILLESPIE FLD (SEE)

RNP APCH - GPS.	MISSED APPROACH: Climb to 1500 then climbing right turn to 3000 direct TOCOD and hold.
<div><div>▼</div><div>⚠</div></div> <div>Circling NA northeast of Rwy 17 and 27R. When local altimeter setting not received, use Miramar MCAS altimeter setting and increase all MDA 40 feet. Rwy 17 helicopter visibility reduction below 1 SM NA. Circling Rwy 27R, 35 NA at night.</div>	

ATIS 125.45	SOCAL APP CON 124.35 279.625	GILLESPIE TOWER* 120.7 (CTAF) 257.8	GND CON 121.7	CLNC DEL 125.1
-----------------------	--	---	-------------------------	--------------------------



ASIXY		Visual Segment - Obstacles.		ELEV 388 TDZE 379	
5000		JUGAL		147°	
139°		TOMTY 3.2 NM to HIRAK		35	
2500		HIRAK		147°	
147°		1580		35	
9.3 NM		2.9 NM		3.2 NM	
0.5					
CATEGORY	A	B	C	D	MIRL Rwy 9L-27R and 17-35 REIL Rwy 27R
LP MDA	1360-1¼ 981 (1000-1¼)	1360-1½ 981 (1000-1½)	1360-3	981 (1000-3)	
LNAV MDA	1380-1¼ 1001 (1000-1¼)	1380-1½ 1001 (1000-1½)	1380-3	1001 (1000-3)	
CIRCLING	1440-1¼ 1052 (1100-1¼)	1440-1½ 1052 (1100-1½)	1940-3	1552 (1600-3)	