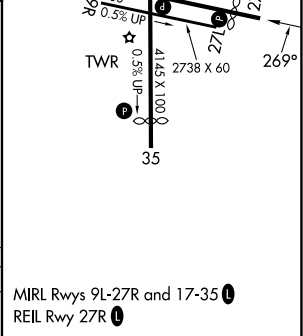
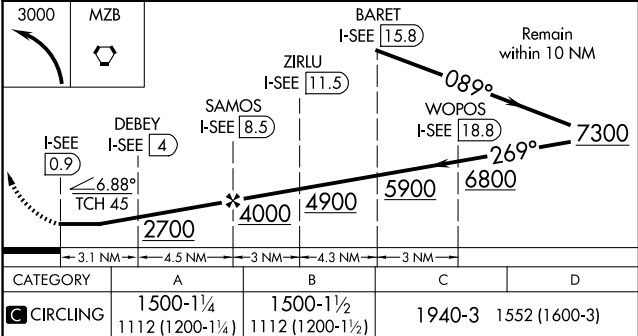
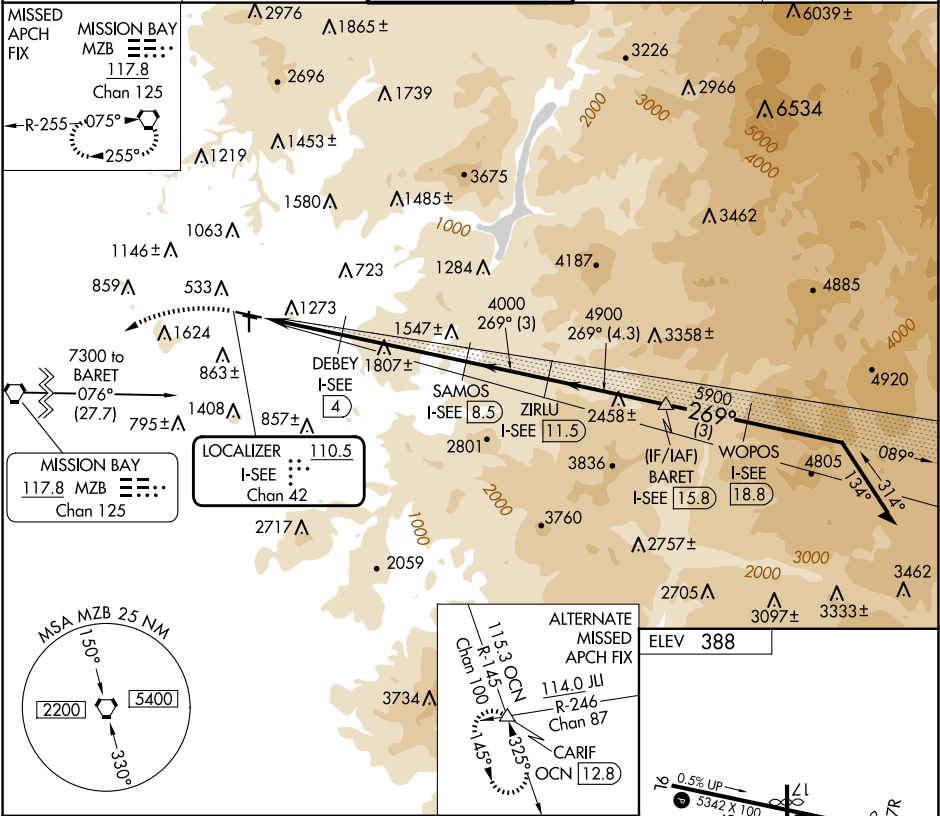


LOC/DME I-SEE 110.5 Chan 42	APP CRS 269°	Rwy Ldg TDZE Apt Elev	N/A N/A 388
--	------------------------	-----------------------------	--

LOC-D
GILLESPIE FLD (SE/E)

DME required.		MISSED APPROACH: Climbing left turn to 3000 direct to MZB VORTAC and hold.
<div><div><div><div><div></div><div></div></div><div><div></div><div></div></div></div><div><div><div></div></div><div><div></div></div></div></div></div> <div>When local altimeter setting not received, use Miramar MCAS altimeter setting and increase all MDA 40 feet. Circling NA northeast of Rwy 27R-17. Circling Rwy 27R, 35 NA at night.</div>		

ATIS 125.45	SOCAL APP CON 124.35 279.625	GILLESPIE TOWER* 120.7 (CTAF) 257.8	GND CON 121.7	CLNC DEL 125.1
-----------------------	--	---	-------------------------	--------------------------



SW-3, 10 JUL 2025 to 07 AUG 2025

SW-3, 10 JUL 2025 to 07 AUG 2025