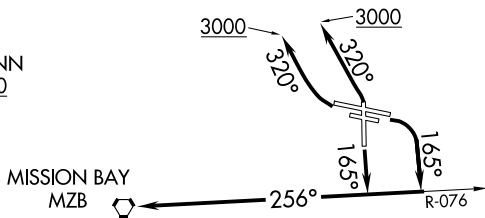


Rwy 9L : 900-2¾ with minimum climb of 400' per NM to 3600.  
 Rwy 9R : 900-2¾ with minimum climb of 405' per NM to 3600.  
 Rwy 17 : Standard with minimum climb of 480' per NM to 2200.  
 Rwy 27L : Standard with minimum climb of 320' per NM to 1200.  
 Rwy 27R : Standard with minimum climb of 420' per NM to 1200.  
 Rwy 35 : Standard with minimum climb of 400' per NM to 1600.

NOTE: Chart not to scale.



## SEAL BEACH TRANSITION (CWARD2.SLI)