

WAAS CH 45710 W28A	APP CRS 281°	Rwy Ldg TDZE 423 Apt Elev 427
--	------------------------	---

RNAV (GPS) RWY 28R
MONTGOMERY-GIBBS EXEC (MYT)

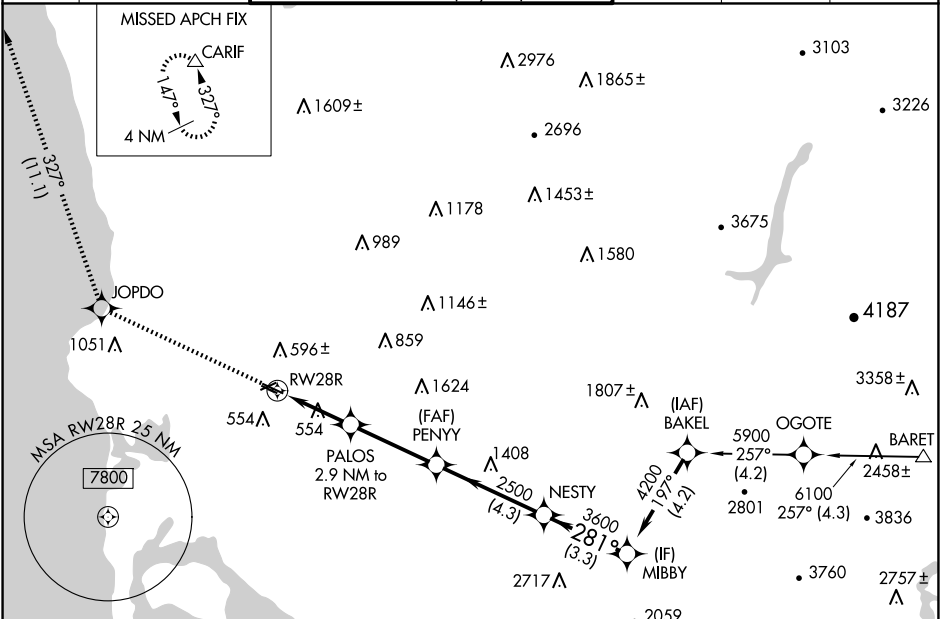
RNP APCH.

▼ Rwy 28R helicopter visibility reduction below ¾ SM NA.
▲ For uncompensated Baro-VNAV systems, LNAV/VNAV NA below -15°C or above 54°C.

MALSR

MISSED APPROACH: Climb to 3000 direct JOPDO and on track 327° to CARIF and hold.

ATIS 126.9	SOCAL APP CON 124.35 279.625	MONTGOMERY TOWER ★ 119.2 (CTAF) 0 269.4 (Rwys 5, 10L/R, 23, 28L) 125.7 269.4 (Rwy 28R)	GND CON 118.225	CLNC DEL 123.725	UNICOM 123.075
----------------------	--	---	---------------------------	----------------------------	--------------------------



ELEV 427	TDZE 423
-----------------	-----------------

3000 JOPDO CARIF

↑ tr 327°

*LNAV only

PALOS 2.9 NM to RW28R

RW28R

1.2 NM to RW28R

PENNY 2500

NESTY 3600

MIBBY 4200

GP 3.00° TCH 41

1.2 NM 1.7 NM 3.4 NM 4.3 NM 3.3 NM

CATEGORY	A	B	C	D
LPV DA	673-¾ 250 (300-¾)			NA
LNAV/VNAV DA	750-¾ 327 (400-¾)			NA
LNAV MDA	840-¾ 417 (500-¾)			NA
CIRCLING	920-1 493 (500-1)			NA

SW-3, 10 JUL 2025 to 07 AUG 2025

SW-3, 10 JUL 2025 to 07 AUG 2025