

ILS or LOC RWY 28R  
MONTGOMERY-GIBBS EXEC (MYF)

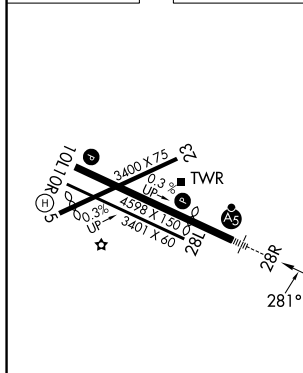
MAISD



MISSED APPROACH: Climb to 1100 then climbing left turn to 3000 on heading 270° and MZB VORTAC R-326 to CARIF INT/MZB 16.3 DME and hold.

[illegible]

ELEV 427		TDZE 423
----------	--	----------



REIL Rwy 28L  
MIRL Rwy 10L-28R

FAF to MAP 6.3 NM

Knots	60	90	120	150	180
Min:Sec	6:18	4:12	3:09	2:31	2:06

SAN DIEGO, CALIFORNIA

Amdt 4D 22APR21

32°49'N-117°08'W

MONTGOMERY-GIBBS EXEC (MYF)  
ILS or LOC RWY 28R