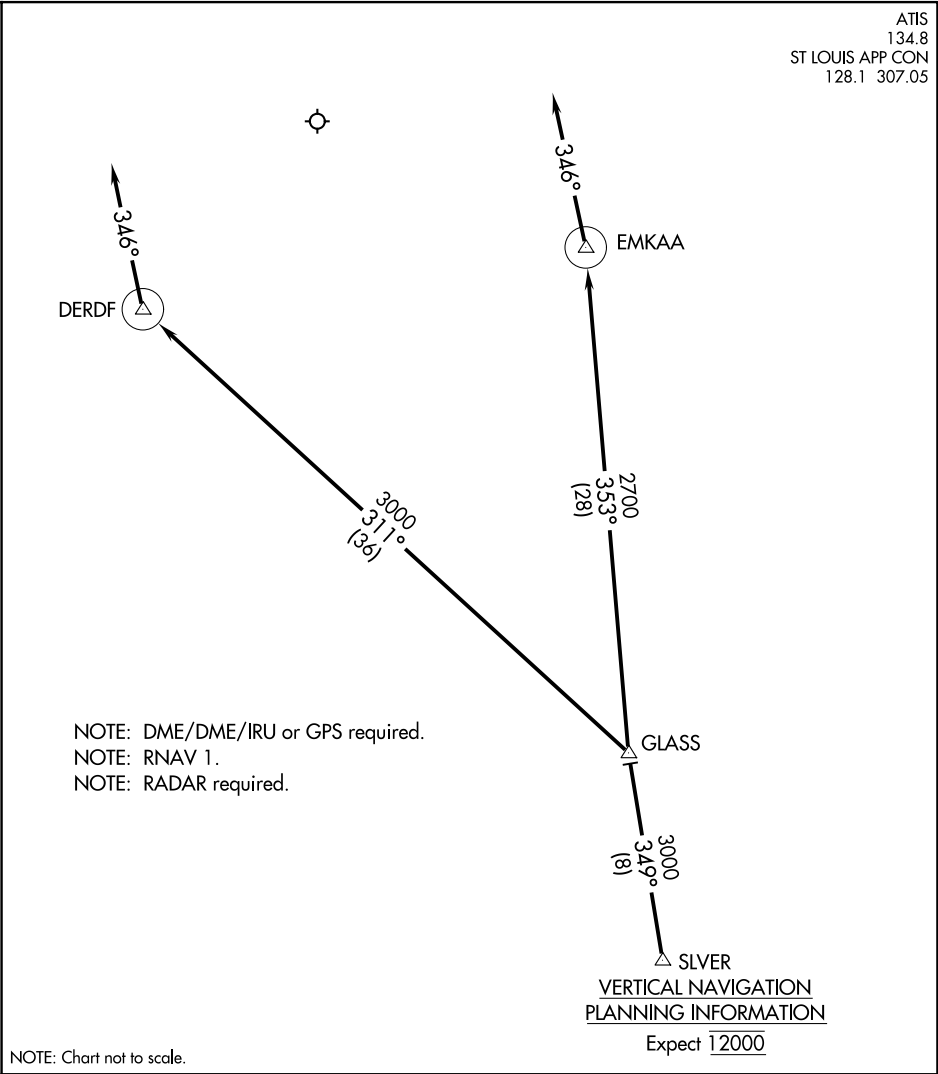


ATIS
134.8

ST LOUIS APP CON
128.1 307.05



ARRIVAL ROUTE DESCRIPTION

From SLVER on track 349° to GLASS.

LANDING RUNWAYS 8L/R: From GLASS on track 311° to DERDF, then on track 346°, expect RADAR vectors prior to DERDF.

LANDING RUNWAYS 26L/R: From GLASS on track 353° to EMKAA, then on track 346°, expect RADAR prior to EMKAA.