

WAAS CH <b>97414</b> <b>W26A</b>	APP CRS <b>259°</b>	Rwy Idg <b>5000</b> TDZE <b>463</b> Apt Elev <b>463</b>
--	------------------------	---

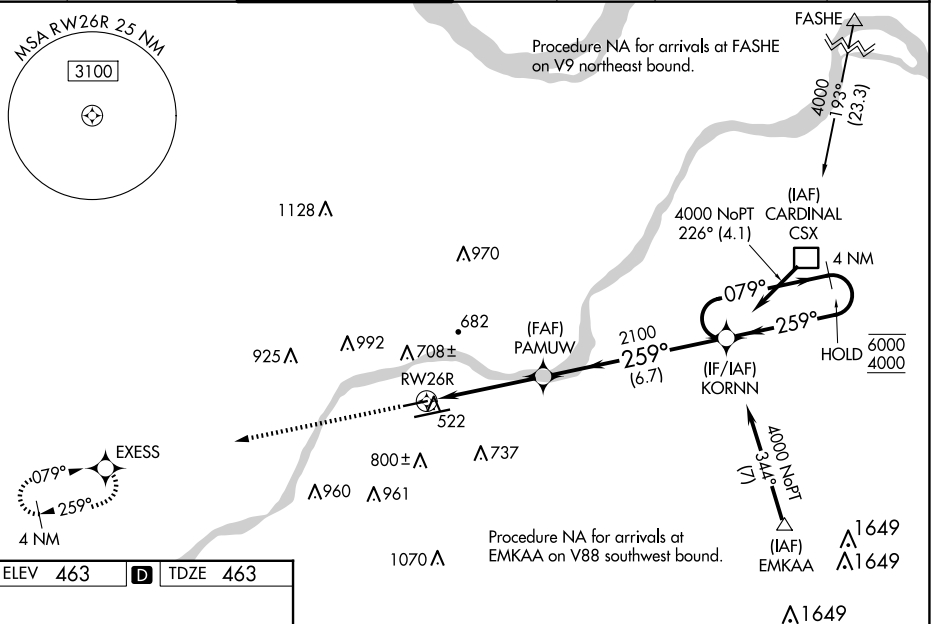
RNAV (GPS) RWY 26R  
SPIRIT OF ST LOUIS (SUS)

RNP APCH - GPS.

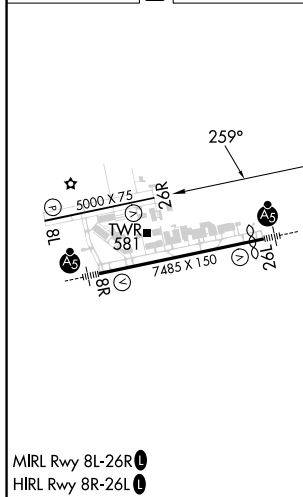
**V** Baro-VNAV and VDP NA when using St Louis Lambert Intl altimeter setting. Rwy 26R helicopter visibility reduction below  $\frac{3}{4}$  SM NA. For uncompensated Baro-VNAV systems, LNAV/VNAV NA below -18°C or above 54°C. When local altimeter setting not received, use St Louis Lambert Intl altimeter setting: increase LPV DA to 798 feet and all visibilities  $\frac{1}{8}$  SM, increase LNAV/VNAV DA to 823 feet and all visibilities  $\frac{1}{8}$  SM; increase all MDA 60 feet.

**MISSED APPROACH:** Climb to 3000 direct EXESS and hold.

ATIS <b>134.8</b>	ST. LOUIS APP CON <b>126.5 254.3</b>	SPIRIT TOWER★ <b>124.75 (CTAF) 0 257.2</b>	GND CON <b>121.7</b>	CLNC DEL <b>133.1</b>	ST. LOUIS CLNC DEL <b>121.7</b> (when tower closed)	UNICOM <b>122.95</b>
----------------------	---	---	-------------------------	--------------------------	---	-------------------------



ELEV 463	<b>D</b>	TDZE 463
----------	----------	----------

[illegible]

RNAV (GPS) RWY 26R